

***TM 9-4120-360-24P**

TECHNICAL MANUAL

**UNIT, DIRECT SUPPORT AND GENERAL SUPPORT MAINTENANCE
REPAIR PARTS AND SPECIAL TOOLS LIST**

**AIR CONDITIONER, VERTICAL, COMPACT,
TYPE 1, VERTICAL SIZE C, 18,000 BTU/HR.,
208 VOLT, 3 PHASE,
50/60 HERTZ, KECO MODEL F18T-2
NSN 4120-00-168-1781**

DISTRIBUTION STATEMENT A: Approved for public release; distribution is unlimited.

*This manual supersedes TM 5-4120-360-24P, dated 28 October 1979.

**HEADQUARTERS, DEPARTMENT OF THE ARMY
31 AUGUST 1993**

TECHNICAL MANUAL
NO. 9-4120-360-24P

HEADQUARTERS
DEPARTMENTS OF THE ARMY
WASHINGTON D. C., 31 August 1993

TECHNICAL MANUAL

Unit, Direct Support and General Support
Maintenance Repair Parts and Special Tools List

Air Conditioner, Vertical, Compact,
Type 1, Vertical Size C, 18,000 BTU/HR.,
208 Volt, 3 Phase,
50/60 Hertz, Keco Model F18T-2
NSN 4120-00-168-1781

Current as of 23 April 1993

REPORTING ERRORS AND RECOMMENDING IMPROVEMENTS

You can help improve this manual. If you find any mistakes or if you know of a way to improve the procedures, please let us know. Mail your letter, DA Form 2028 (Recommended Changes to Publications and Blank Forms), or DA Form 2028-2 located in the back of this manual direct to: Commander, US Army Aviation and Troop Command, ATTN: AMSAT-I-MP, 4300 Goodfellow Blvd., St. Louis, MO 63120-1798. A reply will be furnished directly to you.

DISTRIBUTION STATEMENT A: Approved for public release; distribution is unlimited.

TABLE OF CONTENTS

	Page	Illus/ Figure
section I. INTRODUCTION	1	
section II. REPAIR PARTS LIST		
Group 01 Casing and Related Parts		
Connector, Cover, and Instruction Plates	1-1	1
Casing, Panels, Grilles, Filter and Drain Tubes	2-1	2
Group 02 Control Panel and Junction Box		
Junction Box Assembly	3-1	3
Control Panel Assembly	4-1	4
RFI Filter Assembly	5-1	5
Group 03 Compressor Assembly		
Compressor Assembly and Base Hardware	6-1	6
Group 04 Pressure Control Switch		
Hi and Lo Pressure Switch and Enclosure	7-1	7
Group 05 Refrigerant Components		
Condenser Coil, Valve, Tubing, and Dehydrator	8-1	8
Evaporator Coil, Refrigerant Tubing, Fittings and Valves	9-1	9
Solenoid Valve Assembly (J5 and L1)	10-1	10
Solenoid Valve Assembly (J6 and L2)	11-1	11

*This manual supersedes TM 5-4120-360-24P, dated 28 October 1979.

TM 9-4120-360-24P

Group 06	Heater Assembly		
	Heater Assembly	12-1	12
Group 07	Fans and Motor		
	Fan and Baffle Assembly	13-1	13
	Motor Assembly	14-1	14
Group 08	Wiring Harnesses		
	Junction Box Wire Harness Assemblies	15-1	15
	Wire Harness, Control Box	16-1	16
	Heater and RFI Filter Wire Harness Assemblies	17-1	17
	Wiring Harness and Clamp	18-1	18
Group 09	Bulk Materials	BULK-1	
Section III.	SPECIAL TOOLS LIST (Not Applicable)		
Section IV.	CROSS REFERENCE INDEXES		
	National Stock Number Index	I-1	
	Part Number Index	I-4	
	Figure and Item Number Index	I-15	

UNIT, DIRECT SUPPORT AND GENERAL SUPPORT MAINTENANCE REPAIR PARTS AND SPECIAL TOOLS LIST

Section I. INTRODUCTION

SCOPE. This RPSTL lists and authorizes spares and repair parts; special tools; special test, measurement, and diagnostic equipment (TMDE); and other special support equipment required for performance of unit, direct support, and general support maintenance of the Air Conditioner, 18,000 BTU/HR. It authorizes the requisitioning, issue, and disposition of spares, repair parts and special tools as indicated by the source, maintenance and recoverability (SMR) codes.

GENERAL. In addition to this section, Introduction, this Repair Parts and Special Tools List is divided into the following sections:

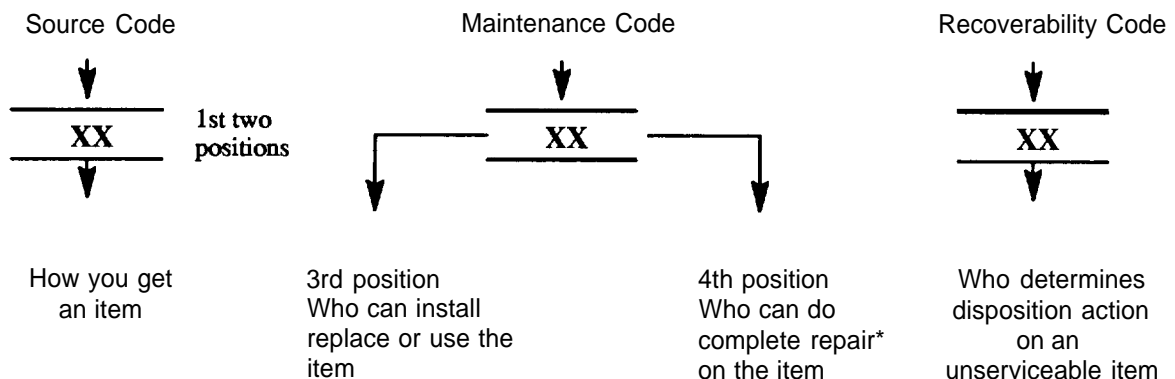
a. **Section II. Repair Parts List.** A list of spares and repair parts authorized by this RPSTL for use in the performance of maintenance. This list also includes parts which must be removed for replacement of the authorized parts. Parts lists are composed of functional groups in ascending alphanumeric sequence, with the parts in each group listed in ascending figure and item number sequence. Bulk materials are listed in item name sequence. Items are shown in the associate illustrations(s)/figure(s).

b. **Section III. Special Tools List.** A list of special tools, special TMDE, and other special support equipment authorized by this RPSTL (as indicated by Basis of Issue (BOI) information in DESCRIPTION AND USABLE ON CODE column) for the performance of maintenance.

c. **Section IV. Cross-References Indexes.** A list, in National Item Identification Number (NIIN) sequence, of all National stock numbered items appearing in the listing, followed by a list in alphanumeric sequence of all part numbers appearing in the listings. National stock numbers and part numbers are cross referenced to each illustration figure and item number appearance. The figure and item number index lists figure and item numbers in alphanumeric sequence and cross references NSN, CAGEC and part number.

EXPLANATION OF COLUMNS (SECTIONS II AND III).

- a. **ITEM NO. (Column (1)).** Indicates the number used to identify items called out in the illustration.
- b. **SMR Code (Column (2)).** The Source, Maintenance, and Recoverability (SMR) code is a 5-position code containing supply/requisitioning information, maintenance category authorization criteria, and disposition instruction, as shown in the following breakout:



* Complete Repair: Maintenance capacity, capability, and authority to perform all corrective maintenance tasks of the "Repair" function in a use/user environment in order to restore serviceability to a failed item.

(1) Source Code. The source code tells you how to get an item needed for maintenance, repair, or overhaul of an end item/equipment. Explanations of source codes follows:

Source Code	Explanation
PA PB PC** PD PE PF PG	<p>Stocked items; use the applicable NSN to request/requisition items with these source codes. They are authorized to the category indicated by the code entered in the 3rd position of the SMR code.</p> <p>*NOTE: Items coded PC are subject to deterioration.</p>
KD KF KB	<p>Items with these codes are not to be requested/requisitioned individually. They are part of a kit which is authorized to the maintenance category indicated in the 3rd position of the SMR code. The complete kit must be requisitioned and applied.</p>

MO - (Made at Unit/AVUM Level) MF - (Made at DS/AVUM Level) MH - (Made at GS Level) ML - (Made at Specialized Repair Activity (SRA)) MD - (Made at Depot)	}	Items with these codes are not to be requested/requisitioned individually. They must be made from bulk material which is identified by the part number in the DESCRIPTION and USABLE ON CODE (UOC) column and listed in the Bulk Material group of the repair parts list in this RPSTL. If the item is authorized to you by the 3rd position code of the SMR code, but the source code indicates it is made at a higher level, order the item from the higher level of maintenance.
---	---	---

AO - (Assembled by Unit/AVUM Level) AF - (Assembled by DS/AVUM Level) AH - (Assembled by GS Category) AL - (Assembled by SRA) AD - (Assembled by Depot)	}	Items with these codes are not to be requested/requisitioned individually. The parts that make up the assembled item must be requisitioned or fabricated and assembled at the level of maintenance indicated by the source code. If the 3rd position code of the SMR code authorizes you to replace the item, but the source code indicates the items are assembled at a higher level, order the item from the higher level of maintenance.
---	---	---

XA - Do not requisition "XA"-coded item. Order its next higher assembly. (Refer to the NOTE below.)

XB - If an "XB" item is not available from salvage, order it using the CAGEC and part number given.

XC - Installation drawing, diagram, instruction sheet, field service drawing, that is identified manufacturer's part number.

XD - Item is not stocked. Order an "XD"-coded item through normal supply channels using the CAGEC and part number given, if no NSN is available.

NOTE

Cannibalization or controlled exchange, when authorized, maybe used as a source of supply for items with the above source codes, except for those source coded "XA" or those aircraft support items restricted by requirements of AR 750-1.

(2) Maintenance Code. Maintenance codes tell you the level(s) of maintenance authorized to USE and REPAIR support items. The maintenance codes are entered in the third and fourth positions of the SMR code as follows:

(a) The maintenance code entered in the third position tells you the lowest maintenance level authorized to remove, replace, and use an item. The maintenance code entered in the third position will indicate authorization to the following levels of maintenance.

Maintenance

Code

Application/Explanation

- C- Crew or operator maintenance done within unit/AVUM maintenance.
- O- Unit level/AVUM maintenance can remove, replace, and use the item.
- F- Direct support/AVIM maintenance can remove, replace, and use the item.
- H- General support maintenance can remove, replace, and use the item.
- L- Specialized repair activity can remove, replace, and use the item.
- D- Depot can remove, replace, and use the item.

(b) The maintenance code entered in the fourth position tells whether or not the item is to be repaired and identifies the lowest maintenance level with the capability to do complete repair (i.e., perform all authorized repair functions.)

NOTE

Some limited repair may be done on an item at a lower level of maintenance, if authorized by the Maintenance Allocation Chart and SMR codes.

Maintenance

Code

Application/Explanation

- O - Unit/AVUM is the lowest level that can do complete repair of the item.
- F - Direct support/AVIM is the lowest level that can do complete repair of the item.
- H - General Support is the lowest level that can do complete repair of the item.
- L - Specialized repair activity is the lowest level that can do complete repair of the item.
- D - Depot is the lowest level that can do complete repair of the item.
- Z - Nonreparable. No repair is authorized.
- B - No repair is authorized. No parts or special tools are authorized for the maintenance of a "B" coded item. However, the item may be reconditioned by adjusting, lubricating, etc., at the user level.

(3) Recoverability Code. Recoverability codes are assigned to items to indicate the disposition action on unserviceable items. The recoverability code is entered in the fifth position of the SMR Code as follows:

Recoverability

Codes

Application/Explanation

- Z - Nonreparable item. When unserviceable, condemn and dispose of the item at the level of maintenance shown in 3d position of SMR Code.
- O - Repairable item. When not economically repairable, condemn and dispose of the item at unit or AVUM level.
- F - Repairable item. When uneconomically repairable, condemn and dispose of the item at the direct support or AVIM level.

- H - Repairable item. When uneconomically repairable, condemn and dispose of the item at the general support level.
- D - Repairable item. When beyond lower level repair capability, return to depot. Condemnation and disposal of item not authorized below depot level.
- L - Repairable item. Condemnation and disposal not authorized below specialized repair activity (SRA).
- A - Item requires special handling or condemnation procedures because of specific reasons (e.g., precious metal content, high dollar value, critical material, or hazardous material). Refer to appropriate manuals/directives for specific instructions.
 - c. CAGEC (Column (3)). The Commercial and Government Entity Code (CAGEC) is a 5-digit numeric code which is used to identify the manufacturer, distributor, or Government agency/activity that supplies the item.
 - d. PART NUMBER (Column(4)). Indicates the primary number used by the manufacturer, (individual, company, firm, corporation, or Government activity), which controls the design and characteristics of the item by means of its engineering drawings, specifications, standards, and inspection requirements to identify an item or range of items.

NOTE

When you use an NSN to requisition an item, the item you receive may have a different part number from the number listed.

- e. DESCRIPTION AND USABLE ON CODE (UOC) (Column (5)) This column includes the following information:
 - (1) The Federal item name and, when required, a minimum description to identify the item.
 - (2) Part numbers of bulk materials are referenced in this column in the line entry to be manufactured/fabricated.
 - (3) The statement "END OF FIGURE" appears just below the last item description in Column (5) for a given figure in both Section II and Section III.
- f. QTY (Column (6)). The QTY (quantity per figure) column indicates the quantity of the item used in the breakout shown on the illustration/figure, which is prepared for a functional group, subfunctional group, or an assembly. A "V" appearing in this column instead of a quantity indicates that the quantity is variable and may vary from application to application.

EXPLANATION OF INDEX FORMAT AND COLUMNS (SECTION IV).

- a. NATIONAL STOCK NUMBER (NSN)INDEX.
 - (1) STOCK NUMBER Column. This column lists the NSN in national item identification number (NIIN) sequence. The NIIN consists of the last nine digits of the NSN, i.e.

NSN
5305-01-574-1467
NIIN

When using this column to locate an item, ignore the first four digits of the NSN. Use the complete NSN (13 digits) when requisitioning items by stock number.

(2) FIG. Column. This column lists the number of the figure where the item is identified/located. The figures are in numerical order in Section II and Section III.

(3) ITEM Column. The item number identifies the item associated with the figure listed in the adjacent FIG. column. This item is also identified by the NSN listed on the same line.

b. PART NUMBER INDEX. Part numbers in this index are listed by part number in ascending alpha-numeric sequence (i e., vertical arrangement of letter and number combination which places the first letter or digit of each group in order A through Z, followed by the numbers O through 9, and each following letter or digit in like order).

(1) CAGEC Column. The Commercial and Government Entity Code (CAGEC) is a 5-digit numeric code used to identify the manufacturer, distributor, or Government agency/activity that supplies the item.

(2) PART NUMBER Column. Indicates the primary number used by the manufacturer (individual, firm, corporation, or Government activity), which controls the design and characteristics of the item by means of its engineering drawings, specifications, standards, and inspection requirements to identify an item or range of items.

(3) STOCK NUMBER Column. This column lists the NSN for the associated part number and manufacturer identified in the PART NUMBER and CAGEC columns to the left.

(4) FIG. Column. This column lists the number of the figure where the item is identified/located in Section II and Section III.

(5) ITEM Column. The item number is that number assigned to the item as it appears in the figure referenced in adjacent figure number column.

c. FIGURE AND ITEM NUMBER INDEX.

(1) FIG. Column. This column lists the number of the figure where the item is identified/located in Section II and Section III.

(2) ITEM Column. The item number is that number assigned to the item as it appears in the figure referenced in the adjacent figure number column.

(3) STOCK NUMBER Column. This column lists the NSN for the item.

(4) CAGEC Column. The Commercial and Government Entity Code (CAGEC) is a 5-digit numeric code used to identify the manufacturer, distributor, or Government agency/activity that supplies the item.

(5) PART NUMBER Column. Indicates the primary number used by the manufacturer (individual, firm, corporation, or Government activity), which controls the design and characteristics of the item by means of its engineering drawings, specifications, standards, and inspection requirements to identify an item or range of items.

SPECIAL INFORMATION

a. USABLE ON CODE. The usable on code appears in the lower left corner of the Description Column heading. Usable on codes are shown as "UOC:..." in the Description Column (justified left) on the last line of the applicable item description/nomenclature. Uncoded items are applicable to all models.

b. FABRICATION INSTRUCTIONS. Bulk materials required to manufacture items are listed in the Bulk Material Functional Group of this RPSTL. Part numbers for bulk materials are also referenced in the description column of the line entry for the item to be manufactured/fabricated. Detailed fabrication instructions for items source coded to be manufactured or fabricated are found in TM9-4120-360-14.

c. INDEX NUMBERS. Items which have the word BULK in the figure column will have an index number shown in the item number column. This index number is across-reference between the National Stock Number/Part Number Index and the bulk material list in Section II.

d. ASSOCIATED PUBLICATION. The publications listed below pertain to the Air Conditioner, 18,000 BTU/HR and its components.

Publication
TM 9-4120-360-14

Short Title
Operator's, Unit, DS and GS Maintenance Manual

HOW TO LOCATE REPAIR PARTS

a. When National Stock Numbers or Parts Numbers are NOT Known

(1) First. Using the table 01 contents, determine the assembly or subassembly group to which the item belongs. This is necessary since figures are prepared for assembly groups and subassembly groups, and listings are divided into the same groups.

(2) Second. Find the figure covering the assembly group or subassembly group to which the item belongs.

(3) Third. Identify the item on the figure and use the Figure and Item Number Index to find the NSN.

b. When National Stock Number or Part Number is Known.

(1) First. Using the of National Stock Number and Part Number Indexes find the pertinent National Stock Number or Part Number. The NSN index is in National Item Identification Number (NIIN) sequence (see paragraph 4.a.). The part numbers in the Part Number index are listed in ascending alphanumeric sequence (see paragraph 4. b.). Both indexes cross-reference you to the illustration/figure and item number of the item you are looking for.

(2) Second. Turn to the figure and item number, verify that the item is the one you are looking for, then locate the item number in the repair parts list for the figure.

ABBREVIATIONS. Abbreviations used in this manual are listed in MIL-STD-12.

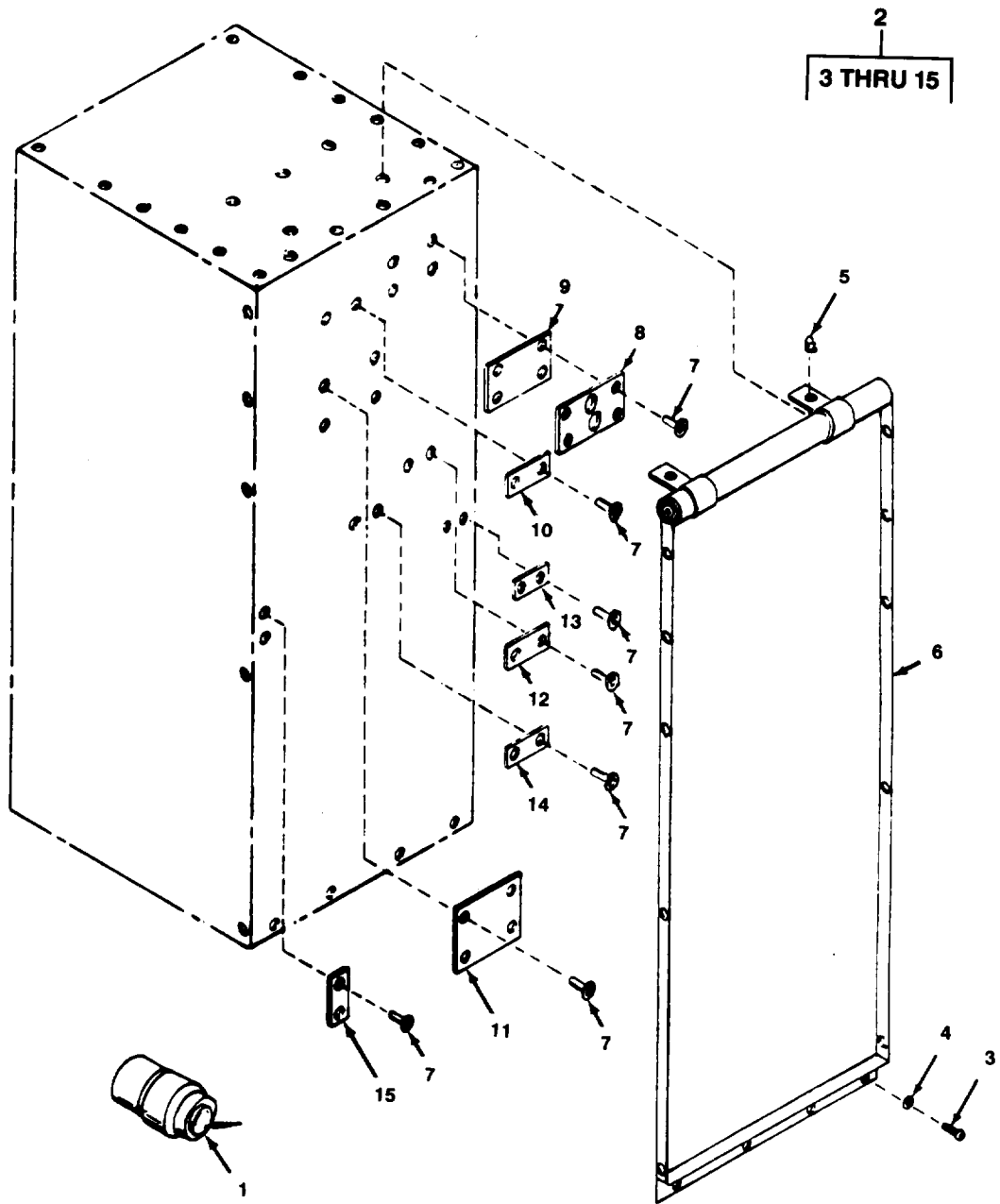


Figure 1. Connector, Cover and Instruction Plates.

SECTION II

TM9-4120-360-24P

(1) ITEM NO	(2) SMR CODE	(3) CAGEC	(4) PART NUMBER	(5) DESCRIPTION AND USABLE ON CODES (UOC)	(6) QTY
GROUP 01 CASING & RELATED PARTS					
FIG. 1 CONNECTOR, COVER AND INSTRUCTION PLATES					
1	PAOZZ	96906	MS3456W22-22S	CONNECTOR, PLUG, ELEC	1
2	XBFZZ	97403	13215E9855-1	AIR CONDT SUB ASSY	1
3	PAOZZ	96906	MS35206-245	.SCREW, MACHINE	18
4	PAOZZ	96906	MS27183-41	.WASHER, FLAT	18
5	PAOZZ	97403	13214E3647-3	.STUD, TURNBUTTON FAS	2
6	PAOZZ	97403	13217E2346	.COVER, AIR CONDITION	1
7	PAOZZ	96906	MS20600B4W4	.RIVET, BLIND	18
8	XDOZZ	97403	13215E9847	.PLATE, INSTRUCTION	1
9	XBOZZ	97403	13215E9852	.GASKET	1
10	XBOZZ	97403	13215E9844	.PLATE, INSTRUCTION	1
11	XBOZZ	94833	91111	.PLATE, INSTRUCTION	1
12	XBOZZ	97403	13211E8215	.PLATE, INSTRUCTION	1
13	XBOZZ	97403	13215E9917	.PLATE, INSTRUCTION	1
14	XBOZZ	97403	13211E8216	.PLATE, DESIGNATION	1
15	XDOZZ	97403	13220E5617	.PLATE, INSTRUCTION	1

END OF FIGURE

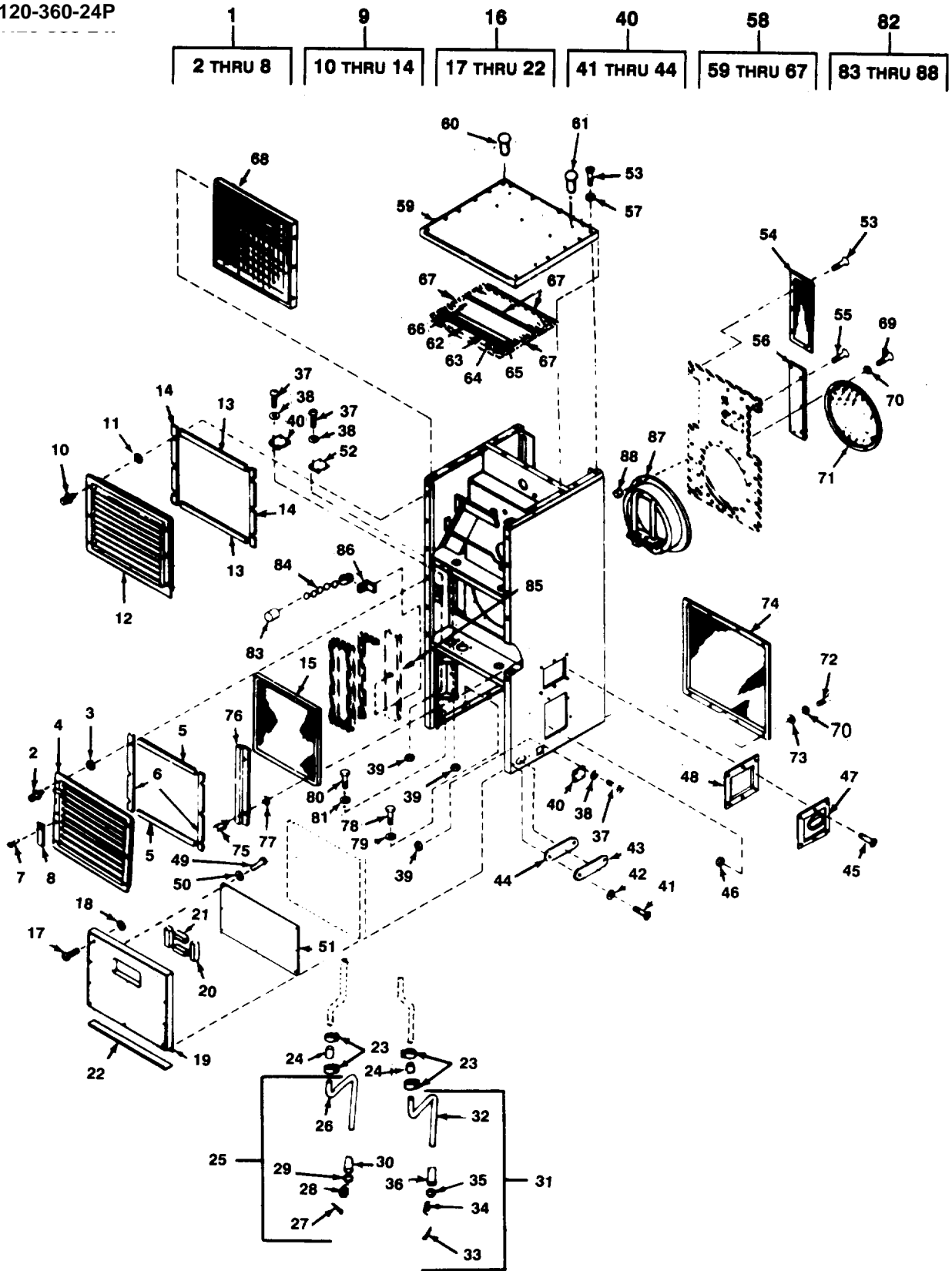


Figure 2. Casing, Panels, Grilles, Filter and Drain Tubes.

(1) ITEM NO	(2) SMR CODE	(3) CAGEC NUMBER	(4) PART NUMBER	(5) DESCRIPTION AND USABLE ON CODES (UOC)	(6) QTY
GROUP 01 CASING & RELATED PARTS					
FIG. 2 CASING, PANELS, GRILLES, FILTER AND DRAIN TUBES					
1	PAOZZ	97403	13215E9854	.VENTILATOR,AIR CIRC	1
2	XDOZZ	98897	STSEC007AS21	..STUD ASSEMBLY,TURNL	6
3	PAOZZ	97403	13211E8386	..WASHER,SPLIT	6
4	XBOZZ	97403	13211E8210	..VENTILATOR,AIR CIRC	1
5	XBOZZ	97403	13215E9854-2	..GASKET,RUBBER	2
6	XBOZZ	97403	13215E9854-3	..GASKET,RUBBER	2
7	PAOZZ	96906	MS20426AD3-6	..RIVET,SOLID	2
8	XBOZZ	97403	13217E2344	..PLATE,INSTRUCTION	1
9	XBOZZ	97403	13215E9857	.VENTILATOR,AIR CIRC	1
10	XDOZZ	98897	STSEC007AS21	..STUD ASSEMBLY,TURNL	6
11	PAOZZ	97403	13211E8386	..WASHER,SPLIT	6
12	XBOZZ	97403	13217E6853	..GRILLE,DISCHARGE	1
13	XBOZZ	97403	13215E9857-2	..GASKET,RUBBER	2
14	XBOZZ	97403	13215E9857-3	..GASKET,RUBBER	2
15	PAOZZ	97403	13211E8224	.FILTER ELEMENT,AIR	1
16	PAOZZ	97403	13215E9873	.PANEL,LOWER	1
17	PAOZZ	97403	13214E3744W34	..SCREW,PANEL FASTENE	2
18	PAOZZ	97403	13211E8337	..WASHER,LOCK	2
19	XBOZZ	97403	13215E9873-1	..PANEL,LOWER	1
20	XBOZZ	97403	13218E9879-2	..GASKET,RFI 2.69"LG	2
21	XBOZZ	97403	13218E9879-2	..GASKET,RFI 6.12"LG	2
22	XBOZZ	97403	13218E9879-2	..GASKET,RFI 14.86"LG	1
23	PAOZZ	96906	MS35842-11	.CLAMP,HOSE	4
24	XBOZZ	97403	13211E8323	.HOSE,DRAIN	2
25	XBOZZ	97403	13219E2682	.DRAIN CONNECTION	1
26	XBOZZ	97403	13219E2682-1	..TUBE	1
27	PAOZZ	96906	MS24665-155	..PIN,COTTER	1
28	XBOZZ	97403	13211E8412	..SPRING,HELICAL,COMP	1
29	XBOZZ	97403	13211E8411	..BALL,BEARING	1
30	XBOZZ	97403	13211E8410	..SEAT,BALL CHECK	1
31	XBOZZ	97403	13219E2681	.DRAIN CONNECTION	1
32	XBOZZ	97403	13219E2681-1	..TUBE	1
33	PAOZZ	96906	MS24665-155	..PIN,COTTER	1
34	XBOZZ	97403	13211E8412	..SPRING, HELICAL,COMP	1
35	XBOZZ	97403	13211E8411	..BALL,BEARING	1
36	XBOZZ	97403	13211E8410	..SEAT,BALL CHECK	1
37	PAOZZ	96906	MS35206-217	.SCREW,MACHINE	12
38	PAOZZ	96906	MS35338-40	.WASHER,LOCK	12
39	PAOZZ	96906	MS35649-242	.NUT,PLAIN,HEXAGON	12
40	XBOZZ	97403	13214E3471-5	.COVER	2
41	XBOZZ	97403	13215E9909-10	..STUD ASSEMBLY,TURNL	2
42	PAOZZ	97403	13211E8386	..WASHER,SPLIT	2
43	XBOZZ	97403	13217E2343	..PANEL,ACCESS	1
44	MOOZZ	97403	13217E2343/4	..GASKET MAKE FROM P/N ASTM- D1056RE45C1F2-1/8THK, CUT TO SIZE	1
45	PAOZZ	96906	MS35191-273	.SCREW,MACHINE	12
46	PAOZZ	96906	MS21044D3	.NUT,SELF-LOCKING,HE	22

SECTION II

TM9-4120-360-24P

(1) ITEM NO	(2) SMR CODE	(3) CAGEC	(4) PART NUMBER	(5) DESCRIPTION AND USABLE ON CODES (UOC)	(6) QTY
47	PAOZZ	96906	MS35792-1	.HANDLE,BAIL	2
48	XBOZZ	97403	13215E9832	.ENCLOSURE,HANDLE	2
49	XBOZZ	96906	MS20470AD4-4	.RIVET,SOLID	8
50	PAOZZ	96906	MS27183-4	.WASHER,FLAT	8
51	XBOZZ	97403	13215E9878-1	.PLATE,INSTRUCTION	1
52	XBOZZ	97403	13214E3471-2	.COVER	1
53	PAOZZ	96906	MS35206-245	.SCREW,MACHINE	6
54	PAOZZ	97403	13215E9858	.SCREEN,FRESH AIR	1
55	PAOZZ	96906	MS35206-247	.SCREW,MACHINE	18
56	XBOZZ	97403	13215E9863	.COVER,CBR DUST	1
57	PAOZZ	80205	NAS1523C08F	.PACKING WITH RETAIN	19
58	PAOZZ	97403	13215E9892	.PANEL, TOP	1
59	XBOZZ	97403	13215E9892-1	..PANEL, TOP	1
60	XBOZZ	80205	NAS1329S08KB75	..NUT, PLAIN, BLIND RIV	4
61	XBOZZ	80205	NAS1329S06KB75	..NUT, PLAIN, BLIND RIV	2
62	XBOZZ	97403	13215E9892-2	..INSULATION	1
63	XBOZZ	97403	13215E9892-4	..INSULATION	1
64	XBOZZ	97403	13218E9878-3	..WIRE MESH, KNITTED	1
65	XBOZZ	97403	13215E9892-13	..INSULATION	1
66	XBOZZ	97403	13215E9892-5	..INSULATION	1
67	XBOZZ	97403	13218E9997-1	..SHIELDING GASKET, EL	2
68	PAOZZ	97403	13219E2647	.MIST ELIMINATOR	1
69	PAOZZ	96906	MS35206-247	.SCREW,MACHINE	8
70	PAOZZ	96906	MS35338-42	.WASHER, LOCK	24
71	XBOZZ	97403	13211E8183	.GUARD, FAN	1
72	PAOZZ	96906	MS35206-248	.SCREW,MACHINE	8
73	PAOZZ	96906	MS27183-41	.WASHER, FLAT	8
74	XBOZZ	97403	13215E9867	.GUARD, COND. FAN	1
75	PAOZZ	97403	13215E9909-5	.STUD ASSEMBLY, TURNL	2
76	XBOZZ	97403	13215E9823	.RETAINER, AIR FILTER	1
77	PAOZZ	97403	13211E8386	.WASHER, SPLIT	2
78	PAOZZ	96906	MS90727-5	.SCREW, CAP, HEXAGON H	6
79	PAOZZ	96906	MS15795-710	.WASHER, FLAT	6
80	PAOZZ	96906	MS90727-7	.SCREW, CAP, HEXAGON H	2
81	PAOZZ	88044	AN960PD416	.WASHER, FLAT	2
82	XAHZZ	97403	13215E9825-1	.CASING	1
83	XBOZZ	97403	13211E8305	..PENDANT WITH SLEEVE	1
84	XBOZZ	97403	13211E8322	..CHAIN ASSEMBLY, AIR	1
85	XBOZZ	96906	MS20470AD4-3	..RIVET, SOLID	1
86	XBOZZ	97403	13211E8191	..HINGE, BUTT	2
87	XBOZZ	97403	13211E8319	..MOTOR SUPPORT	1
88	PAOZZ	96906	MS27130A13K	..NUT, PLAIN, BLIND RIV	4

END OF FIGURE

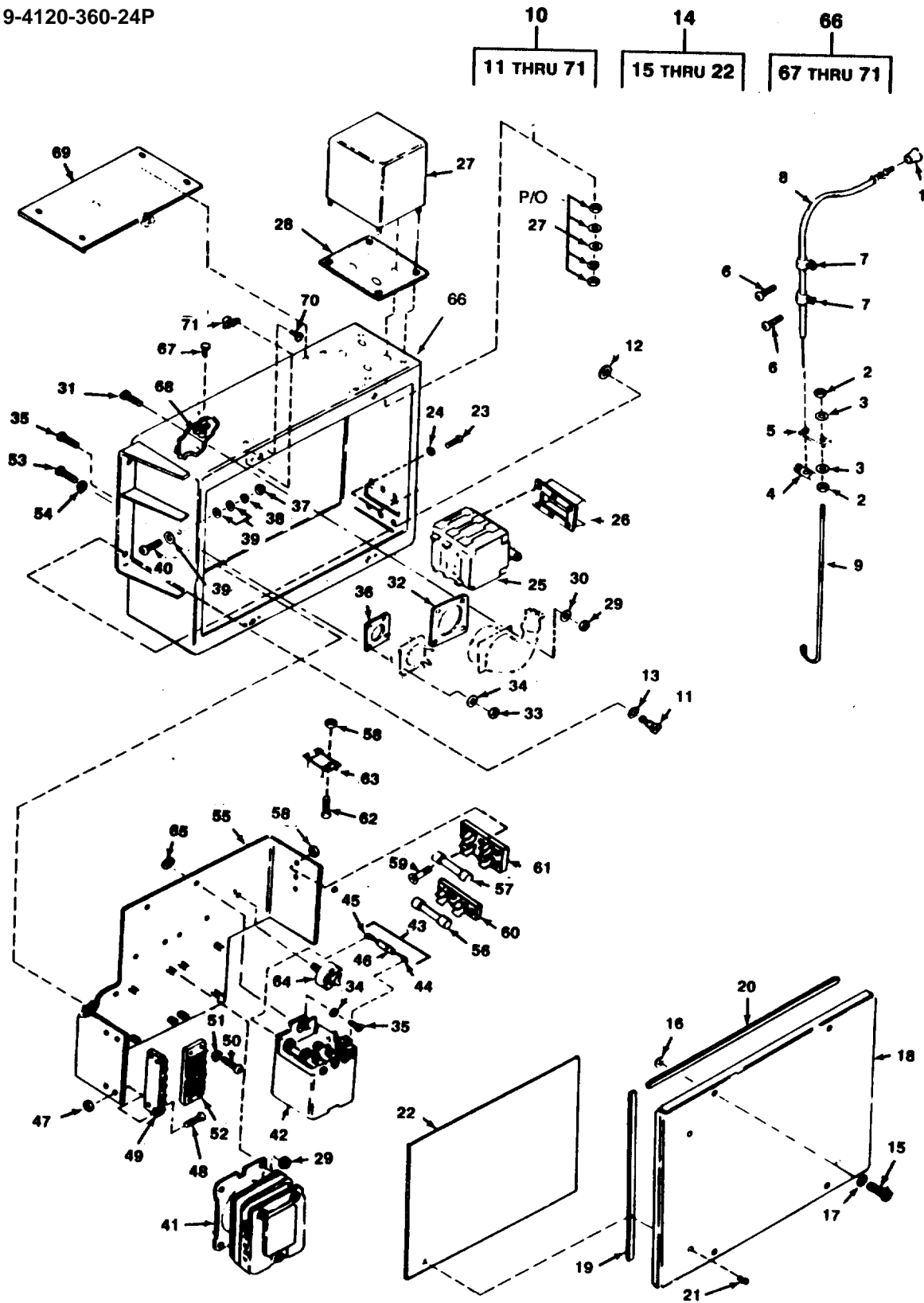


Figure 3. Junction Box Assembly.

(1) ITEM NO	(2) SMR CODE	(3) CAGEC	(4) PART NUMBER	(5) DESCRIPTION AND USABLE ON CODES (UOC)	(6) QTY
GROUP 02 CONTROL PANEL AND JUNCTION BOX					
FIG. 3 JUNCTION BOX ASSEMBLY					
1	XBOZZ	97403	13217E6816	.KNOB	1
2	PAOZZ	96906	MS35650-302	.NUT, PLAIN, HEXAGON	2
3	PAOZO	96906	MS27183-42	.WASHER, FLAT	2
4	XBOZZ	97403	13217E6817	.END FITTING, FLEXIBL	1
5	XBOZZ	97403	13220E5616	.PLATE, CONNECTING	1
6	PAOZZ	96906	MS35207-261	.SCREW, MACHINE	2
7	PAOZZ	96906	MS21322-33	.CLAMP, LOOP	2
8	XBOZZ	97403	13217E6815-3	.CONTORL ASSEMBLY, PU	1
9	PBFZZ	97403	13220E5615-1	.ARM, SWITCH ACTUATOR	1
10	XBOZZ	97403	13217E2366-1	.JUNCTION BOX ASSY	1
11	PAOZZ	97403	13214E3744W5	..SCREW, PANEL FASTENE	4
12	PAOZZ	97403	13211E8337	..WASHER, LOCK	4
13	PAOZZ	96906	MS35333-40	..WASHER, LOCK	4
14	PAOZZ	97403	13215E9893	..COVER, JUNCTION BOX	1
15	PAOZZ	97403	13214E3744W5	...SCREW, PANEL FASTENE	4
16	PAOZZ	97403	13211E8337	...WASHER, LOCK	4
17	PAOZZ	80205	NAS1523C4F	...PACKING WITH RETAIN	4
18	XBOZZ	97403	13215E9893-1	...COVER, JUNCTION BOX	1
19	XBOZZ	97403	13215E9893-2	...GASKET .75 X 9" LG	2
20	XBOZZ	97403	13215E9893-2	...GASKET, .75 X12.5 LG	2
21	PAOZZ	96906	MS20600B4W2	...RIVET, BLIND	6
22	XBOZZ	97403	13217E2341	...PLATE, FLUID DIAGRAM	1
23	PAOZZ	96906	MS35206-226	..SCREW, MACHINE	6
24	PAOZZ	96906	MS35338-41	..WASHER, LOCK	6
25	PAOZZ	97403	13216E6205-3	..CIRCUIT BREAKER	1
26	XBOZZ	97403	13215E9822	..COVER, BREAKER	1
27	PAOZZ	97403	13214E3818-5	..TRANSFORMER, POWER INCLUDES ATTACHING HARDWARE	1
28	XBOZZ	97403	13214E3685-2	..INSULATOR, PLATE	1
29	PAOZZ	96906	MS21045-08	..NUT, SELF-LOCKING, HE	8
30	PAOZZ	96906	MS27183-41	..WASHER, FLAT	4
31	PAOZZ	96906	MS35206-247	..SCREW, MACHINE	4
32	XBOZZ	96906	MS51007-13	..GASKET	1
33	PAOZZ	96906	MS21045-04	..NUT, SELF-LOCKING, HE	8
34	PAOZZ	96906	MS27183-4	..WASHER, FLAT	14
35	PAOZZ	96906	MS35206-218	..SCREW, MACHINE	18
36	XBOZZ	96906	MS51007-8	..GASKET	1
37	PAOZZ	96906	MS21045-3	..NUT, SELF-LOCKING, HE	1
38	PAOZZ	96906	MS35338-41	..WASHER, LOCK	1
39	PAOZZ	96906	MS27183-42	..WASHER, FLAT	3
40	PAOZZ	96906	MS35207-266	..SCREW, MACHINE	1
41	PAOZZ	96906	MS24192D1	..RELAY, ELECTROMAGNET	2
42	PAOZZ	97403	13215E9921	..RELAY, ELECTROMAGNET	2
43	XBOZZ	97403	13215E9881	..SEMICONDUCTOR DEVIC	1
44	PAOZZ	96906	MS25036-149	...TERMINAL, LUG	2
45	XBOZZ	97403	13215E9881-2	...INSULATION, TUBING	1
46	PAOZZ	97403	13216E7689	...SEMICONDUCTOR DEVIC	1

SECTION II

TM9-4120-360-24P

(1) ITEM NO	(2) SMR CODE	(3) CAGEC	(4) PART NUMBER	(5) DESCRIPTION AND USABLE ON CODES (UOC)	(6) QTY
47	PAOZZ	96906	MS21045-04	..NUT, SELF-LOCKING, HE	4
48	PAOZZ	96906	MS35206-218	..SCREW, MACHINE	4
49	XBOZZ	97403	13213E0636	..TERMINAL BOARD	1
50	PAOZZ	96906	MS35206-219	..SCREW, MACHINE	4
51	PAOZZ	96906	MS27183-4	..WASHER, FLAT	4
52	XBOZZ	81349	TY37TB6	..TERMINAL BOARD	1
53	PAOZO	96906	MS35207-262	..SCREW, MACHINE	8
54	PAOZZ	80205	NAS1523C3F	..PACKING WITH RETAIN	8
55	XBOZZ	97403	13217E2368	..PANEL, JUNCTION BOX	1
56	PAOZA	56232	338591-4	..FUSE, CARTRIDGE	1
57	PAOZZ	81349	F09B250V1-6/10A	..FUSE, CARTRIDGE	2
58	PAOZZ	96906	MS21045-06	..NUT, SELF-LOCKING, HE	8
59	PAOZZ	96906	MS35190-237	..SCREW, MACHINE	4
60	XBOZZ	97403	13214E3811	..FUSE HOLDER	1
61	XBOZZ	97403	13211E3784	..FUSEHOLDER, BLOCK	1
62	PAOZO	96906	MS35206-228	..SCREW, MACHINE	4
63	PAOZZ	97403	13216E6182-3	..RELAY, ELECTROMAGNET	1
64	PAOZZ	97403	13214E3652	..RECTIFIER, SEMICONDU	1
65	XBOZO	96906	MS27183-11	..WASHER, FLAT	1
66	XBOZZ	97403	13217E2367	..JUNCTION BOX	1
67	PAOZZ	96906	MS20426AD3-4	...RIVET, SOLID	8
68	PAOZZ	80205	NAS1031A3	...NUT, SELF-LOCKING, PL	4
69	XBOZZ	97403	13217E2364-4	...GASKET	1
70	XBOZZ	96906	MS20601AD4W2	...RIVET, BLIND	8
71	XBOZZ	97403	13211E8382	...NUT, SHEET SPRING	4

END OF FIGURE

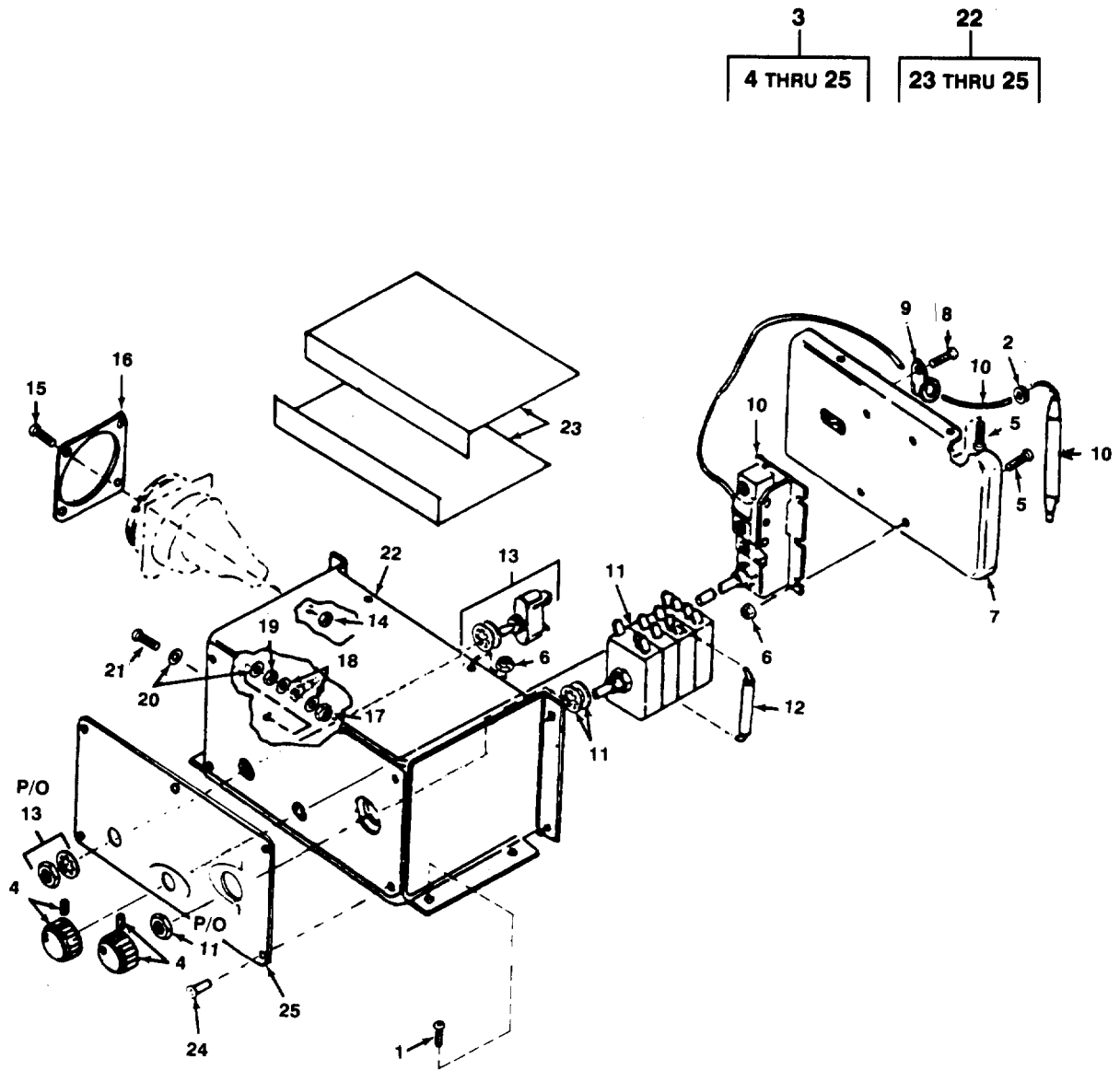


Figure 4. Control Panel Assembly.

SECTION II

TM9-4120-360-24P

(1) ITEM NO	(2) SMR CODE	(3) CAGEC	(4) PART NUMBER	(5) DESCRIPTION AND USABLE ON CODES (UOC)	(6) QTY
GROUP 02 CONTROL PANEL AND JUNCTION BOX					
FIG. 4 CONTROL PANEL ASSEMBLY					
1	PAOZO	96906	MS35207-264	.SCREW,MACHINE	10
2	PAOZZ	96906	MS35489-1	.GROMMET, NONMETALLIC	1
3	PAOOO	97403	13218E8492-1	.CONTROL PANEL ASSEM	1
4	XDOZZ	96906	MS91528-2P4B	..KNOB INCLUDES SETSCREW	2
5	PAOZZ	96906	MS35206-244	..SCREW,MACHINE	8
6	PAOZZ	96906	MS21045-08	..NUT, SELF-LOCKING, HE	8
7	XBOZZ	97403	13218E8494	..PANEL	1
8	PAOZO	96906	MS35207-262	..SCREW,MACHINE	1
9	PAOZZ	96906	MS21919DFH6	..CLAMP, LOOP	1
10	PAOZZ	97403	13211E8301-1	..SWITCH, THERMOSTATIC	1
11	PAOZZ	97403	13216E6201-1	..SWITCH, ROTARY INCLUDES ATTACHING HARDWARE	1
12	PAOZZ	81349	RCR32G274JS	..RESISTOR, FIXED, COMP 1W, 270K, 5%	3
13	PAOZZ	96906	MS24523-22	..SWITCH, TOGGLE INCLUDES ATTACHING HARDWARE	1
14	PAOZZ	96906	MS21045-06	..NUT, SELF-LOCKING, HE	4
15	PAOZZ	96906	MS35206-231	..SCREW, MACHINE	4
16	XBOZZ	96906	MS51007-10	..GASKET	1
17	PAOZZ	96906	MS21045-3	..NUT, SELF-LOCKING, HE	1
18	PAOZZ	96906	MS27183-8	..WASHER, FLAT	2
19	PAOZZ	96906	MS35650-302	..NUT, PLAIN, HEXAGON	1
20	PAOZZ	96906	MS15795-709	..WASHER, FLAT	2
21	PAOZZ	96906	MS35207-266	..SCREW, MACHINE	1
22	XBOZZ	97403	13218E8493	..CONTROL PANEL	1
23	XBOZZ	97403	13214E3762	... INSULATOR, ANGLE BRA	2
24	PAOZZ	96906	MS20600AD4W-2	... RIVET, BLIND	5
25	XBOZZ	97403	13218E8495	... PLATE, INSTRUCTION	1

END OF FIGURE

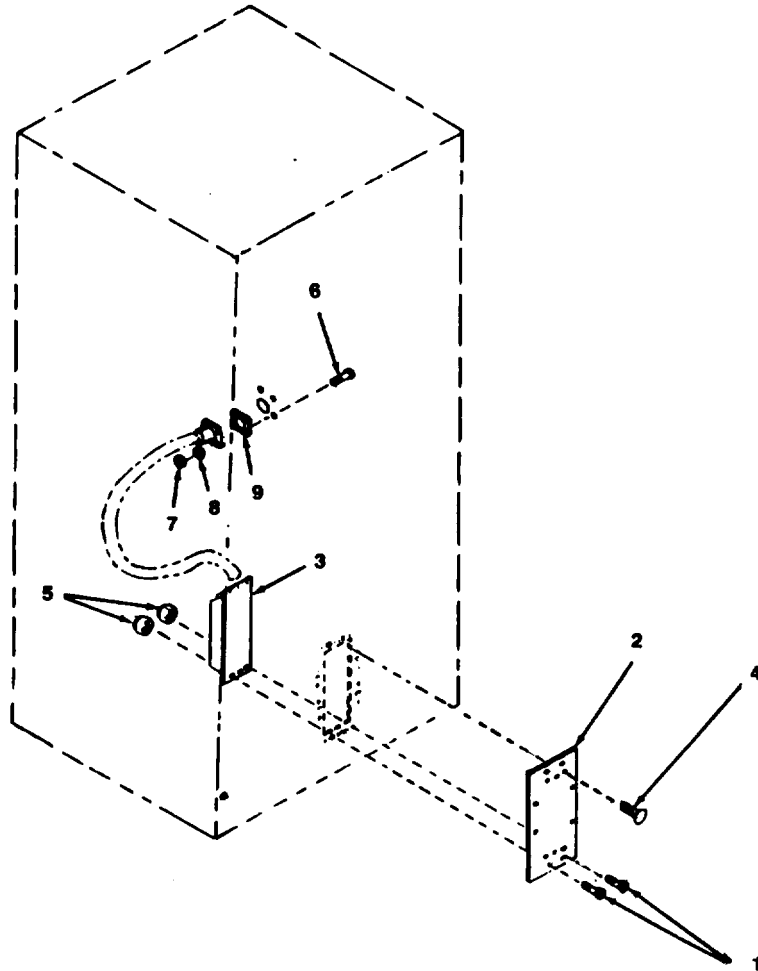


Figure 5. RFI Filter Assembly

SECTION II

TM9-4120-360-24P

(1) ITEM NO	(2) SMR CODE	(3) CAGEC	(4) PART NUMBER	(5) DESCRIPTION AND USABLE ON CODES (UOC)	(6) QTY
GROUP 02 CONTROL PANEL AND JUNCTION BOX					
FIG. 5 RFI FILTER ASSEMBLY					
1	PAOZO	96906	MS35207-264	SCREW,MACHINE	6
2	XBOZZ	97403	13220E5618	PLATE,FILTER,MTG	1
3	PAOZZ	97403	13218E9877	FILTER,RADIO FREQUE	1
4	PAOZZ	96906	MS20426AD3-4	RIVET,SOLID	8
5	PAOZZ	80205	NAS1031A3	NUT,SELF-LOCKING,PL	8
6	PAOZZ	96906	MS35206-217	SCREW,MACHINE	4
7	PAOZZ	96906	MS35649-242	NUT,PLAIN,HEXAGON	4
8	PAOZZ	96906	MS35338-40	WASHER,LOCK	4
9	XBOZZ	96906	MS51007-8	GASKET	1

END OF FIGURE

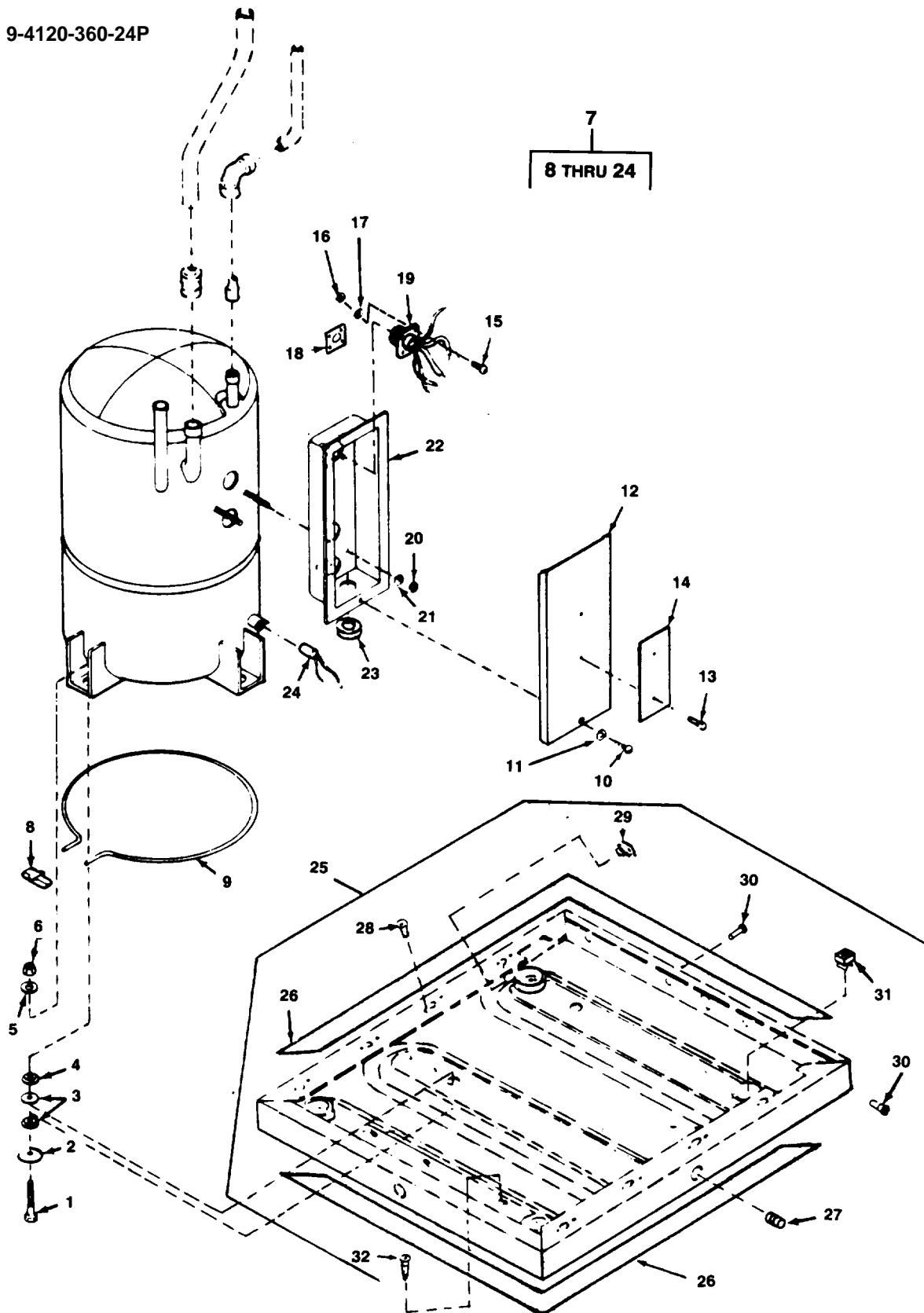


Figure 6. Compressor Assembly and Base Hardware.

SECTION II

TM9-4120-360-24P

(1) ITEM NO	(2) SMR CODE	(3) CAGEC	(4) PART NUMBER	(5) DESCRIPTION AND USABLE ON CODES (UOC)	(6) QTY
GROUP 03 COMPRESSOR ASSEMBLY					
FIG. 6 COMPRESSOR ASSEMBLY AND BASE HARDWARE					
1	PAOZZ	97403	13211E8166	.BOLT, EXTERNALLY REL	4
2	PAOZZ	88044	AN970-6	.WASHER, FLAT	4
3	PAOZZ	97403	13211E8170	.WASHER, SHOULDRED	8
4	PAOZZ	97403	13211E8169	.BUSHING, SLEEVE	4
5	PAOZZ	88044	AN970-5	.WASHER, FLAT	4
6	PAOZZ	96906	MS51967-5	.NUT, PLAIN, HEXAGON	4
7	PAFZZ	97403	13211E3793-4	.COMPRESSOR UNIT, REF	1
8	XBFZZ	10855	KA90EC080	..BAND, MARKER	1
9	PAFZZ	87358	SW1230-21	..HEATING ELEMENT, ELE	1
10	XBOZZ	96906	MS24621-18	..SCREW	1
11	XBOZZ	96906	MS35338-22	..WASHER	1
12	XBOZZ	10855	1RG4076C	..COVER, JUNCTION BOX	1
13	XBFZ	96906	MS20470AD2-4	..RIVET, SOLID	2
14	XBOZZ	10855	1RG5212C	..NAME PLATE	1
15	PAFZZ	96906	MS35206-217	..SCREW, MACHINE	4
16	PAFZZ	96906	MS35649-242	..NUT, PLAIN, HEXAGON	4
17	PAFZZ	96906	MS35338-40	..WASHER, LOCK	4
18	XBFZZ	96906	MS51007-1	..GASKET	1
19	XDFZZ	96906	MS3102R20-15P	..CONNECTOR, RECEPTACL	1
20	XBFZZ	10855	8RG5004B	..NUT	2
21	XBFZZ	10855	AU02AA131	..WASHER	2
22	XBFZZ	10855	2RG5222C	..JUNCTION BOX	1
23	XBFZZ	96906	MS35489-37	..GROMMET, NONMETALLIC	1
24	XDFZZ	14859	20640L15-88-135	..SWITCH, THERMOSTATIC	1
25	XBOZZ	97403	13215E9865	.PANEL, BOTTOM	1
26	XBOZZ	97403	13218E9997-1	..SHIELDING GASKET, EL	2
27	XDOZZ	97403	13211E8178	..PLUG, PIPE	4
28	PAOZZ	96906	MS20426AD3-4	..RIVET, SOLID	16
29	PAOZZ	96906	MS21059L4	..NUT, SELF-LOCKING, PL	8
30	PAOZZ	80205	NAS1329S08KB120	..NUT, PLAIN, BLIND RIV	6
31	XDOZZ	97403	13211E3895-14	..NUT, PLAIN, CLINCH	4
32	XBOZZ	96906	MS27130S26K	..NUT, PLAIN, BLIND RIV	3

END OF FIGURE

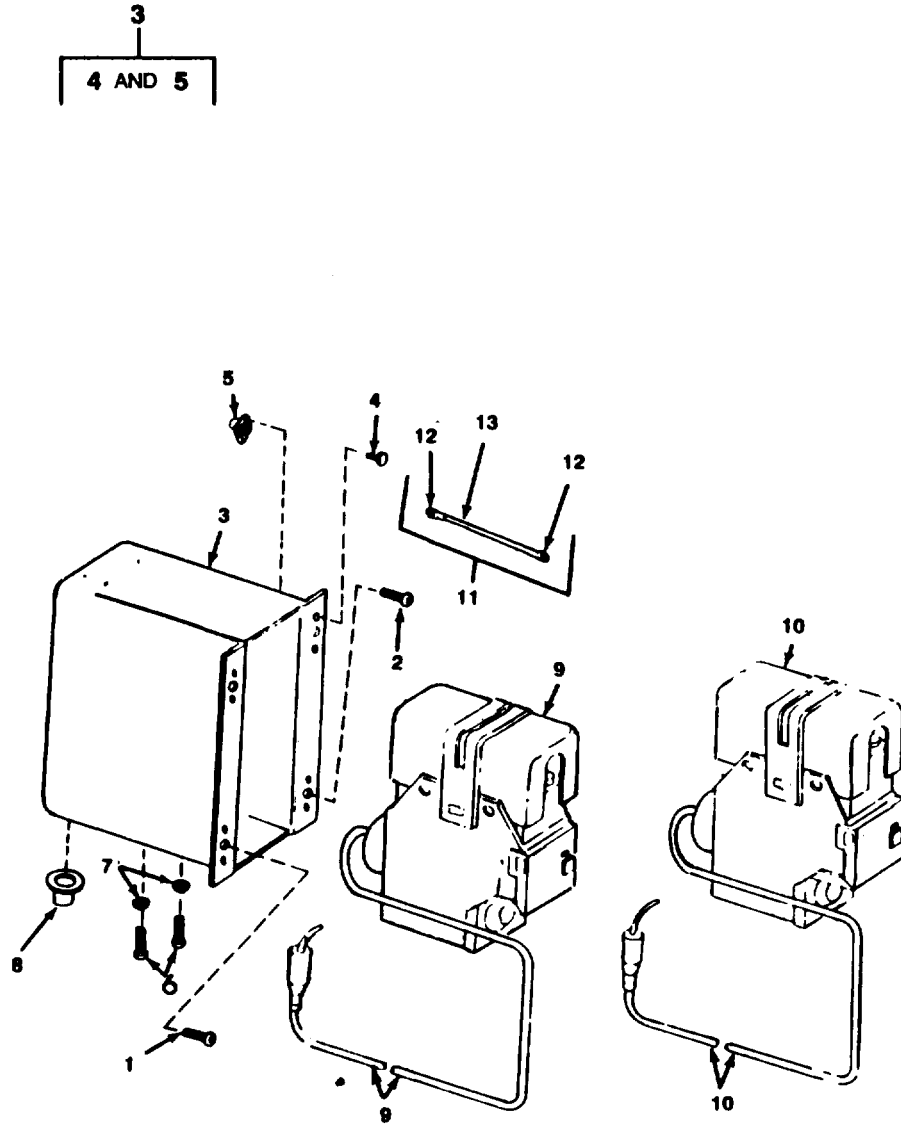


Figure 7. HI and Lo Pressure Switch and Enclosure.

SECTION II

TM9-4120-360-24P

(1) ITEM NO	(2) SMR CODE	(3) CAGEC	(4) PART NUMBER	(5) DESCRIPTION AND USABLE ON CODES (UOC)	(6) QTY
GROUP 04 PRESSURE SWITCHES					
FIG. 7 HI AND LO PRESSURE SWITCH AND ENCLOSURE					
1	XBOZZ	96906	MS35206-230	.SCREW,MACHINE	2
2	XBOZZ	96906	MS35190-238	.SCREW,MACHINE	2
3	XBOZZ	97403	13215E9841	.ENCLOSURE	1
4	PAOZZ	96906	MS20426AD3-4	..RIVET,SOLID	8
5	XBOZZ	80205	NAS1031-D06	..NUT,SELF LOCK PLATE	4
6	XBOZZ	96906	MS35206-227	.SCREW,MACHINE	4
7	PAOZZ	96906	MS35338-41	.WASHER, LOCK	4
8	XBOZZ	96906	MS35489-6	.GROMMET, NONMETALLIC	1
9	PAFZZ	97403	13214E4309	.SWITCH,PRESSURE LOW	1
10	PAFZZ	97403	13211E8404	.SWITCH,PRESSURE HI	1
11	AOOZZ	97403	13215E9861	.LEAD,ELECTRICAL	1
12	PAOZZ	96906	MS25036-153	..TERMINAL, LUG	2
13	MOOZZ	97403	13215E9861/1	..WIRE,ELECTRICAL MAKE FROM P/N M5086/2-16-9, CUT TO LENGTH	1

END OF FIGURE

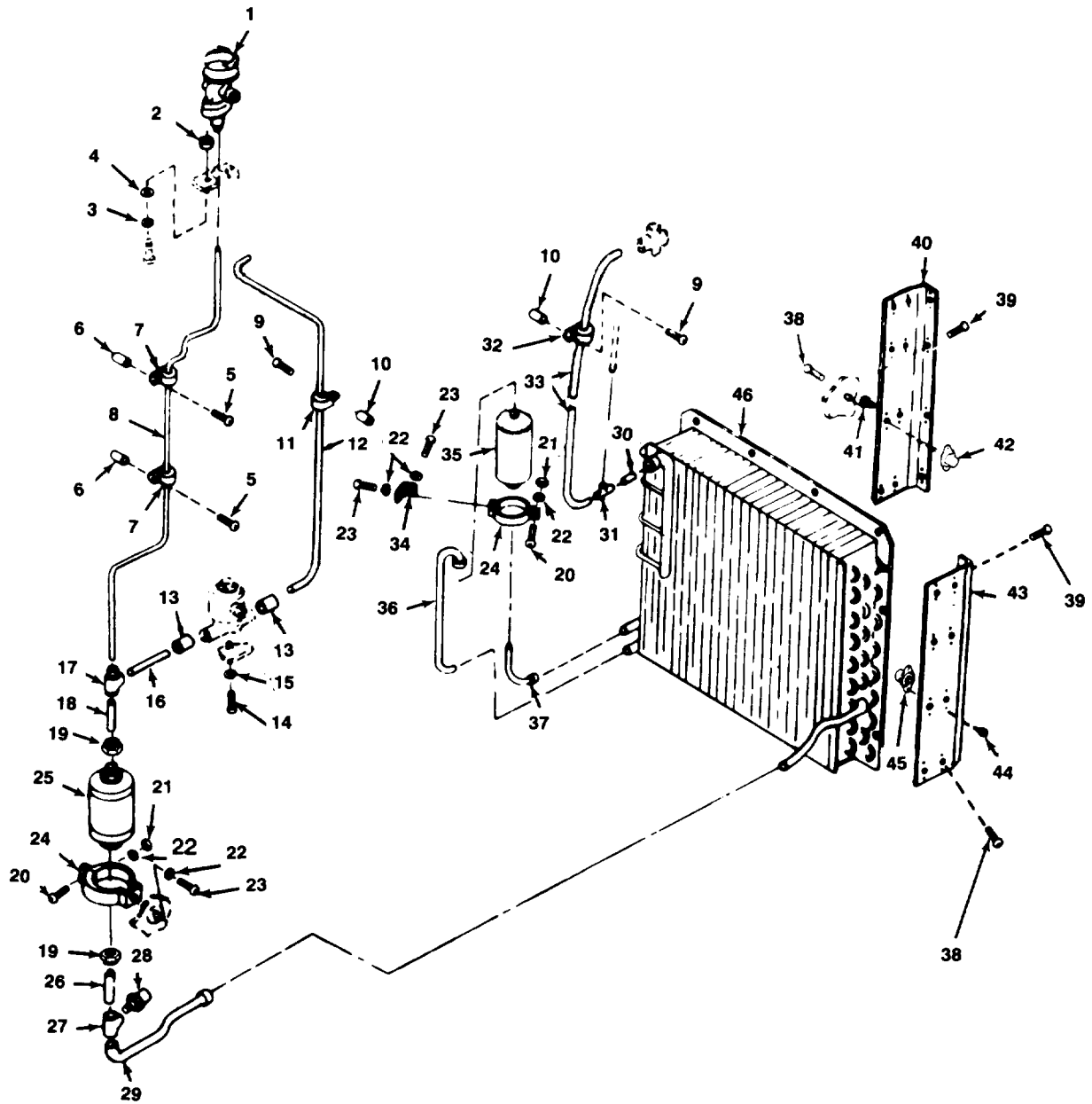


Figure 8. Condenser Coil, Valve, Tubing and Dehydrator.

SECTION II

TM9-4120-360-24P

(1) ITEM NO	(2) SMR CODE	(3) CAGEC	(4) PART NUMBER	(5) DESCRIPTION AND USABLE ON CODES (UOC)	(6) QTY
GROUP 05 REFRIGERANT COMPONENTS					
FIG. 8 CONDENSER COIL, VALVE, TUBING AND DEHYDRATOR					
1	PAFZZ	97403	13214E3785-1	.VALVE,EXPANSION	1
2	XBFZZ	97403	13211E8376-3	.SPACER,SLEEVE	4
3	PAOZZ	96906	MS35340-46	.WASHER,LOCK	4
4	PAOZZ	96906	MS27183-13	.WASHER,FLAT	4
5	PAOZZ	96906	MS35207-269	.SCREW,MACHINE	2
6	XBFZZ	97403	13211E8376-8	.SPACER,SLEEVE	2
7	PAOZZ	96906	MS21122-4	.CLAMP,LOOP	2
8	MFFZZ	81346	ASTM-B280-1/4OD	.TUBE,METALLIC MAKE FROM P/N ASTM- B280-1/4OD, CUT TO LENGTH	1
9	PAFZZ	96906	MS35207-268	.SCREW,MACHINE	7
10	XBOZZ	97403	13211E8376-1	.SPACER,SLEEVE	7
11	PAOZZ	96906	MS21919WDF6	.CLAMP,LOOP	4
12	MFFZZ	81346	ASTM-B280-3/8OD	.TUBE,METALLIC MAKE FROM P/N ASTM- B280-3/8OD, CUT TO LENGTH	1
13	PAFZZ	97403	13211E3799-3	.REDUCER,TUBE	2
14	PAOZZ	96906	MS35206-244	.SCREW,MACHINE	4
15	PAOZZ	96906	MS35338-42	.WASHER,LOCK	4
16	MFFZZ	81346	ASTM-B280-3/8OD	.TUBE,METALLIC MAKE FROM P/N ASTM- B280-3/8OD, CUT TO LENGTH	1
17	XBFZZ	97403	13211E4043-7	.TEE,TUBE	1
18	MFFZZ	81346	ASTM-B280-3/8OD	.TUBE,METALLIC MAKE FROM P/N ASTM- B280-3/8OD, CUT TO LENGTH	1
19	PAFZZ	96906	MS35872-3	.NUT,TUBE COUPLING	2
20	PAOZZ	96906	MS35207-285	.SCREW,MACHINE	2
21	PAOZZ	96906	MS35650-3252	.NUT,PLAIN,HEXAGON	2
22	PAOZZ	96906	MS35338-44	.WASHER,LOCK	9
23	PAOZZ	96906	MS35207-281	.SCREW,MACHINE	4
24	XBOZZ	97403	13211E8406-2	.BRACKET	2
25	PAFZZ	97403	13214E3793	.FILTER-DRIER,REFRIG	1
26	MFFZZ	81346	ASTM-B280-3/8OD	.TUBE,METALLIC MAKE FROM P/N ASTM- B280-3/8OD, CUT TO LENGTH	1
27	XBFZZ	97403	13214E3411-3	.TEE,PIPE TO TUBE	1
28	PAFZZ	97403	13211E8369	.VALVE,SAFETY RELIEF	1
29	MFFZZ	81346	ASTM-B280-3/8OD	.TUBE,METALLIC MAKE FROM P/N ASTM- B280-3/8OD, CUT TO LENGTH	1
30	MFFZZ	81346	ASTM-B280-1/2OD	.TUBE,METALLIC MAKE FROM P/N ASTM- B280-1/2OD, CUT TO LENGTH	1
31	XBFZZ	97403	13211E4043-12	.TEE,TUBE	1
32	XDOZZ	96906	MS21104D8	.CLAMP,LOOP	3
33	MFFZZ	81346	ASTM-B280-1/2OD	.TUBE,METALLIC MAKE FROM P/N ASTM- B280-1/2OD, CUT TO LENGTH	1
34	XBOZZ	97403	13220E5619	.BRACKET,ANGLE	1
35	XBFZZ	97403	13214E3798-3	.RECEIVER,LIQUID REF	1
36	MFFZZ	81346	ASTM-B280-3/8OD	.TUBE,METALLIC MAKE FROM P/N ASTM- B280-3/8OD, CUT TO LENGTH	1
37	MFFZZ	81346	ASTM-B280-3/8OD	.TUBE,METALLIC MAKE FROM P/N ASTM- B280-3/8OD, CUT TO LENGTH	1

SECTION II

TM9-4120-360-24P

(1) ITEM NO	(2) SMR CODE	(3) CAGEC	(4) PART NUMBER	(5) DESCRIPTION AND USABLE ON CODES (UOC)	(6) QTY
38	PAOZZ	96906	MS35207-263	. SCREW, MACHINE	16
39	PAOZZ	96906	MS24693S272	. SCREW, MACHINE	8
40	XBFZZ	97403	13215E9888	. BRACKET, COIL, MTG	1
41	PAOZZ	96906	MS20426AD3-4	. . RIVET, SOLID	24
42	PAOZZ	80205	NAS1031A3	. . NUT, SELF-LOCKING, PL	12
43	XBFZZ	97403	13215E9887	. BRACKET, COIL MTG	1
44	PAOZZ	96906	MS20426AD3-4	. . RIVET, SOLID	24
45	PAOZZ	80205	NAS1031A3	. . NUT, SELF-LOCKING, PL	12
46	PBFZZ	14852	M7160	. COOLING COIL, AIR, DU	1

END OF FIGURE

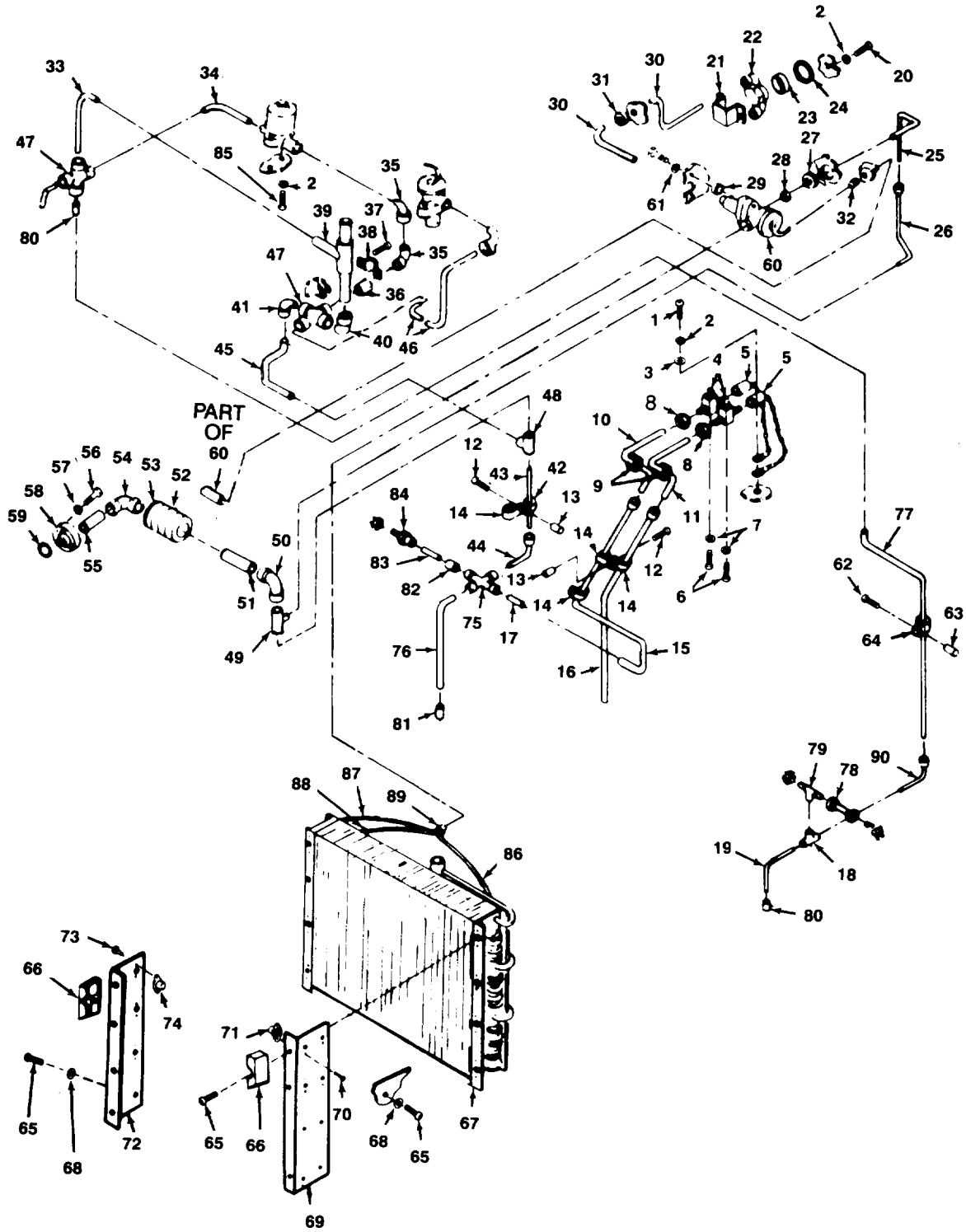


Figure 9. Evaporator Coil, Refrigerant Tubing, Fittings and Valves.

(1) ITEM NO	(2) SMR CODE	(3) CAGEC	(4) PART NUMBER	(5) DESCRIPTION AND USABLE ON CODES (UOC)	(6) QTY
GROUP 05 REFRIGERANT COMPONENTS					
FIG. 9 EVAPORATOR COIL, REFRIGERANT TUBING, FITTINGS AND VALVES					
1	PAOZZ	96906	MS35206-247	.SCREW, MACHINE	2
2	PAOZZ	96906	MS35338-42	.WASHER, LOCK	4
3	PAOZZ	96906	MS27183-41	.WASHER, FLAT	2
4	PAFZZ	97403	13219E9499-1	.VALVE, GLOBE	2
5	PAFZZ	97403	13219E9540	.CAP AND CHAIN	2
6	PAOZZ	96906	MS35206-226	.SCREW, MACHINE	2
7	PAOZZ	96906	MS35338-41	.WASHER, LOCK	2
8	PAFZZ	96906	MS35872-2	.NUT, TUBE COUPLING	2
9	XBFZO	96906	MS35489-7	.GROMMET, NONMETALLIC	2
10	MFFZZ	81346	ASTM-B280-1/4OD	.TUBE, METALLIC MAKE FROM P/N ASTM- B280-1/4OD, CUT TO LENGTH	1
11	MFFZZ	81346	ASTM-B280-1/4OD	.TUBE, METALLIC MAKE FROM P/N ASTM- B280-1/4OD, CUT TO LENGTH	1
12	PAOZZ	96906	MS35207-268	.SCREW, MACHINE	1
13	XBOZZ	97403	13211E8376-1	.SPACER, SLEEVE	1
14	PAOZZ	96906	MS21122-4	.CLAMP, LOOP	3
15	MFFZZ	81346	ASTM-B280-1/4OD	.TUBE, METALLIC MAKE FROM P/N ASTM- B280-1/4OD, CUT TO LENGTH	1
16	MFFZZ	81346	ASTM-B280-1/4OD	.TUBE, METALLIC MAKE FROM P/N ASTM- B280-1/4OD, CUT TO LENGTH	1
17	XBFZZ	97403	13211E3799-1	.REDUCER, TUBE	1
18	XBFZZ	97403	13214E3411-3	.TEE, PIPE TO TUBE	1
19	MFFZZ	81346	ASTM B280-3/8OD	.TUBE, METALLIC MAKE FROM P/N ASTM- B280-3/8OD, CUT TO LENGTH	1
20	PAFZZ	96906	MS35206-245	.SCREW, MACHINE	2
21	XBFZZ	97403	13211E8245	.BRACKET, MOUNTING	1
22	PAFZZ	97403	13211E8218	.INDICATOR, SIGHT, LIQ	1
23	XBFZZ	97403	13211E8242	.SPACER	1
24	XBFZZ	97403	13211E8255	.GASKET	1
25	MFFZZ	81346	ASTM-B280-1/4OD	.TUBE, METALLIC MAKE FROM P/N ASTM- B280-1/4OD, CUT TO LENGTH	1
26	MFFZZ	81346	ASTM-B280-1/4OD	.TUBE, METALLIC MAKE FROM P/N ASTM- B280-1/4OD, CUT TO LENGTH	1
27	XSBFZZ	96906	MS35489-8	.GROMMET, NONMETALLIC	1
28	PAFZZ	96906	MS35872-2	.NUT, TUBE COUPLING	1
29	XBFZZ	97403	13211E8376-3	.SPACER, SLEEVE	1
30	MFFZZ	81346	ASTM B280-3/8OD	.TUBE, METALLIC MAKE FROM P/N ASTM- B280-3/8OD, CUT TO LENGTH+E4	2
31	XBFZZ	96906	MS35489-11	.GROMMET, RUBBER	1
32	PAOZZ	96906	MS35489-1	.GROMMET, NONMETALLIC	1
33	MFFZZ	81346	ASTM-B280-1/2OD	.TUBE, METALLIC MAKE FROM P/N ASTM- B280-1/2OD, CUT TO LENGTH	1
34	MFFZZ	81346	ASTM-B280-1/2OD	.TUBE, METALLIC MAKE FROM P/N ASTM- B280-1/2OD, CUT TO LENGTH	1
35	PAFZZ	97403	13216E6176-3	.ELBOW, TUBE	2
36	MFFZZ	81346	ASTM-B280-1/2OD	.TUBE, METALLIC MAKE FROM P/N ASTM- B280-1/2OD, CUT TO LENGTH	1

SECTION II

TM9-4120-360-24P

(1) ITEM NO	(2) SMR CODE	(3) CAGEC	(4) PART NUMBER	(5) DESCRIPTION AND USABLE ON CODES (UOC)	(6) QTY
37	PAOZZ	96906	MS35206-230	.SCREW,MACHINE	2
38	XBFZZ	96906	MS21315-22	.STRAP,RETAINING	1
39	PAFZZ	97403	13211E3800	.VALVE,REGULATING,FL	1
40	XBFZZ	41947	W2621	.ELBOW,TUBE	1
41	PAFZZ	97403	13216E6176-3	.ELBOW,TUBE	1
42	XBOZZ	96906	MS21104D10	.CLAMP,LOOP	1
43	MFFZZ	81346	ASTM B280-5/8OD	.TUBE,METALLIC MAKE FROM P/N ASTM- B280-5/8OD, CUT TO LENGTH	1
44	MFFZZ	81346	ASTM-B280-5/8OD	.TUBE,METALLIC MAKE FROM P/N ASTM- B280-5/8OD, CUT TO LENGTH	1
45	MFFZZ	81346	ASTM-B280-1/2OD	.TUBE,METALLIC MAKE FROM P/N ASTM- B280-1/2OD, CUT TO LENGTH	1
46	MFFZZ	81346	ASTM-B280-3/8OD	.TUBE,METALLIC MAKE FROM P/N ASTM- B280-3/8OD, CUT TO LENGTH	1
47	XBFZZ	97403	13211E8370	.CROSS,TUBE	2
48	XBFZZ	97403	13211E4043-20	.TEE,TUBE	1
49	MFFZZ	81346	ASTM-B280-5/8OD	.TUBE,METALLIC MAKE FROM P/N ASTM- B280-5/8OD, CUT TO LENGTH	1
50	XBFZZ	97403	13215E9864-5	.ELBOW,TUBE	1
51	MFFZZ	81346	ASTM-B280-3/4OD	.TUBE,METALLIC MAKE FROM P/N ASTM- B280-3/4OD, CUT TO LENGTH	1
52	PAOZZ	81349	MIL-I-24391	.TAPE,INSULATION,ELE	1
53	MOOZZ	81349	MIL-P-15280/2	.TUBING,PLASTIC MAKE FROM P/N MIL- P-15280/2, CUT TO LENGTH	1
54	XBFZZ	97403	13216E6190-5	.ELBOW,TUBE	1
55	MFFZZ	81346	ASTM-B280-3/4OD	.TUBE,METALLIC MAKE FROM P/N ASTM- B280-3/4OD, CUT TO LENGTH	1
56	PAOZZ	96906	MS16997-62	.SCREW,CAP,SOCKET HE	3
57	PAOZZ	96906	MS35338-44	.WASHER,LOCK	3
58	XDFZZ	97403	13211E8233	.FLANGE,PIPE	1
59	XBFZZ	97403	13211E8394-1	.PACKING,PREFORMED	1
60	PAFZZ	97403	13215E9839	.VALVE,EXPANSION	1
61	PAOZZ	96906	MS35340-46	.WASHER,LOCK	1
62	PAOZZ	96906	MS35207-268	.SCREW,MACHINE	1
63	XBOZZ	97403	13211E8376-1	.SPACER,SLEEVE	1
64	PAOZZ	96906	MS21919WDF6	.CLAMP,LOOP	1
65	PAOZZ	96906	MS35207-263	.SCREW,MACHINE	10
66	XBFZZ	97403	13219E2648	.BRACKET,MOUNTING	2
67	PBFZZ	97403	13215E9836	.COOLING COIL,AIR,DU	1
68	XBFZZ	80205	NAS1523C3F	.PACKING WITH RETAIN	8
69	XBFZZ	97403	13215E9827	.BRACKET,COIL	1
70	PAOZZ	96906	MS20426AD3-4	.RIVET,SOLID	16
71	PAOZZ	80205	NAS1031A3	.NUT,SELF-LOCKING,PL	8
72	XBFZZ	97403	13215E9898	.BRACKET,ANGLE	1
73	PAOZZ	96906	MS20426AD3-4	.RIVET,SOLID	16
74	PAOZZ	80205	NAS1031A3	.NUT,SELF-LOCKING,PL	8
75	XBFZZ	97403	13218E6857	.CROSS,TUBE	1
76	MFFZZ	81346	ASTM B280-3/4OD	.TUBE,METALLIC MAKE FROM P/N ASTM- B280-3/4OD, CUT TO LENGTH	1
77	MFFZZ	81346	ASTM B280-3/8OD	.TUBE,METALLIC MAKE FROM P/N ASTM- B280-3/8OD, CUT TO LENGTH	1
78	XBFZZ	94833	A54477-1	.UNION,SWIVEL	1

SECTION II

TM9-4120-360-24P

(1) ITEM NO	(2) SMR CODE	(3) CAGEC	(4) PART NUMBER	(5) DESCRIPTION AND USABLE ON CODES (UOC)	(6) QTY
79	XBFZZ	96906	MS35871-2-2F	.TEE,PIPE TO TUBE	1
80	PAFZZ	97403	13211E3799-3	.REDUCER,TUBE	2
81	XBFZZ	97403	13211E3799-8	.REDUCER,TUBE	1
82	XBFZZ	97403	13211E3799-4	.REDUCER,TUBE	1
83	MFFZZ	81346	ASTM-B280-3/8OD	.TUBE,METALLIC MAKE FROM P/N ASTM-B280-3/8OD, CUT TO LENGTH	1
84	XBFZZ	96906	MS35919-23	.REDUCER,TUBE	1
85	PAFZZ	96906	MS35206-244	.SCREW,MACHINE	2
86	MFFZZ	81346	ASTM-B280-5/32OD	.TUBE,METALLIC MAKE FROM P/N ASTM-B280-5/32OD, CUT TO LENGTH	1
87	MFFZZ	81346	ASTM-B280-5/32OD	.TUBE,METALLIC MAKE FROM P/N ASTM-B280-5/32OD, CUT TO LENGTH	1
88	MFFZZ	81346	ASTM-B280-5/32OD	.TUBE,METALLIC MAKE FROM P/N ASTM-B280-5/32OD, CUT TO LENGTH	1
89	XBFZZ	97403	13214E3986-5	.DISTRUBUTOR,REFRIGE	1
90	MFFZZ	81346	ASTM-B280-3/8OD	.TUBE,METALLIC MAKE FROM P/N ASTM-B280-3/8OD, CUT TO LENGTH	1

END OF FIGURE

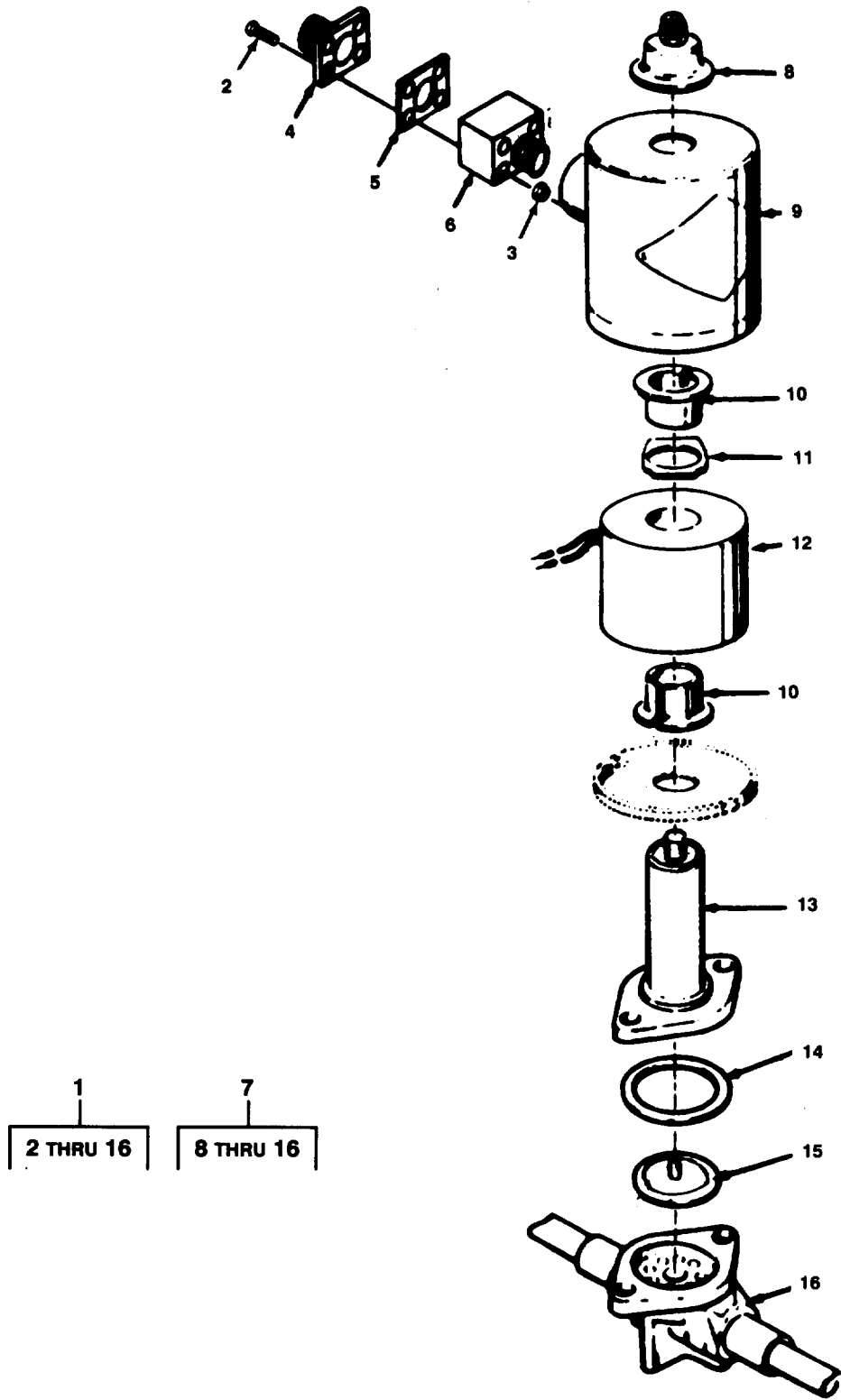


Figure 10. Solenoid Valve Assembly.
(J5 and L1)

SECTION II

TM9-4120-360-24P

(1) ITEM NO	(2) SMR CODE	(3) CAGEC	(4) PART NUMBER	(5) DESCRIPTION AND USABLE ON CODES (UOC)	(6) QTY
GROUP 05 REFRIGERANT COMPONENTS					
FIG. 10 SOLENOID VALVE ASSEMBLY (J5 AND L1)					
1	XBFZZ	97403	13214E4224-5	. VALVE, SOLENOID ASSY	1
2	PAOZZ	96906	MS35206-222	.. SCREW, MACHINE	4
3	PAOZZ	96906	MS21044N04	.. NUT, SELF-LOCKING, HE	4
4	XBOZZ	96906	MS3102R12S-3P	.. CONNECTOR, RECEPTACL	1
5	XBOZZ	96906	MS51007-3	.. GASKET	1
6	XBOZZ	97403	13214E0696-3	.. ADAPTER	1
7	PAFZZ	93781	ORS320-24VDC	.. VALVE, SOLENOID	1
8	XBOZZ	93781	0B3-141	... NUT, COIL	1
9	XBOZZ	93781	0B3-27	... HOUSING, COIL	1
10	XAOZZ	93781	3MP25	... SLEEVE, COIL	2
11	XBOZZ	93781	0B241-2	... SPRING, COIL	1
12	PAOZZ	93781	0757051	... COIL, ELECTRICAL	1
13	XBFZZ	93781	0B234-15	... BONNET	1
14	XAFZZ	93781	P45-11	... PACKING, PREFORMED	1
15	XBFZZ	93781	0B235-7	... DIAPHRAGM	1
16	XBFZZ	93781	0B241-1	... BODY, VALVE	1

END OF FIGURE

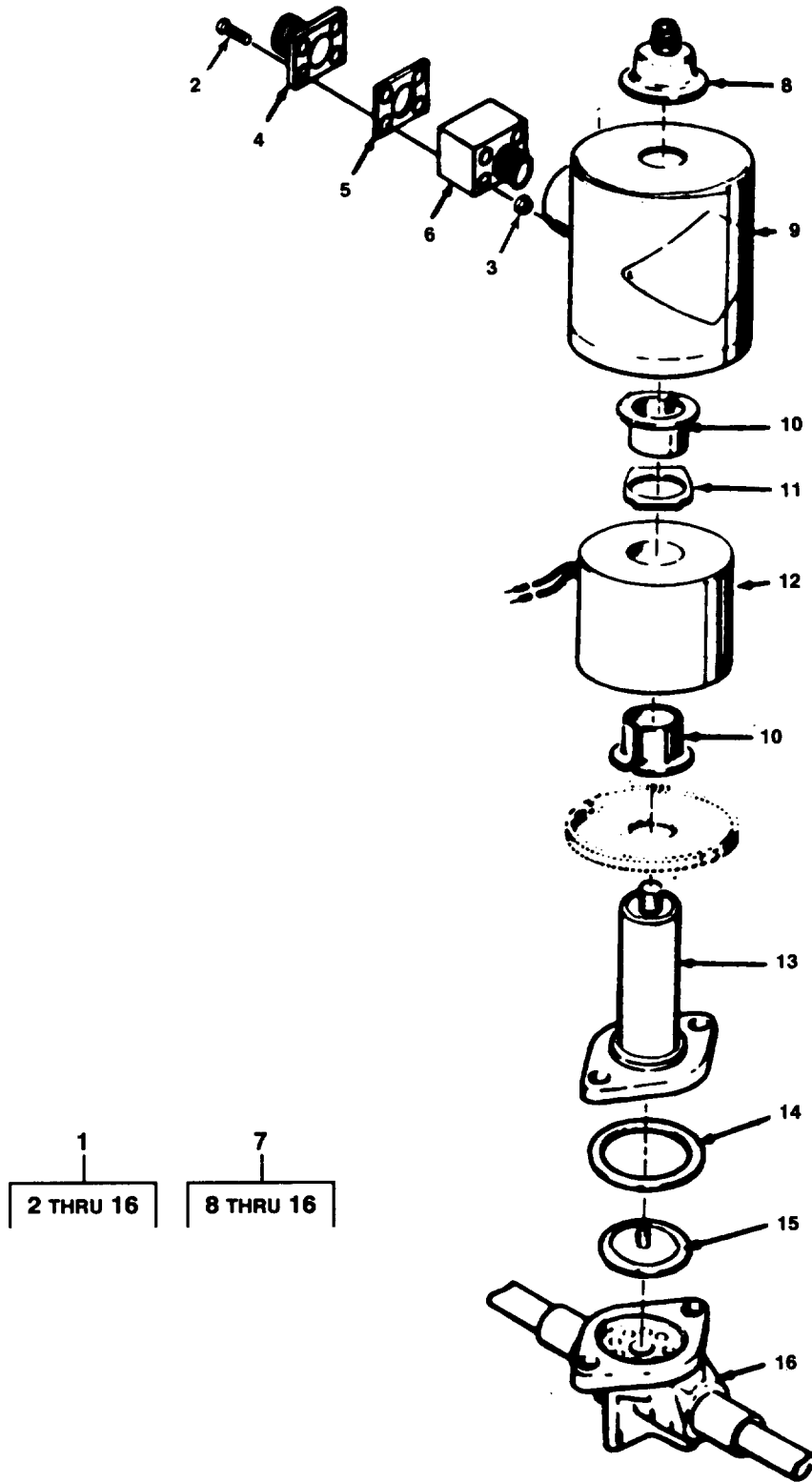


Figure 11. Solenoid Valve Assembly.
(J6 and L2)

SECTION II

TM9-4120-360-24P

(1) ITEM NO	(2) SMR CODE	(3) CAGEC	(4) PART NUMBER	(5) DESCRIPTION AND USABLE ON CODES (UOC)	(6) QTY
GROUP 05 REFRIGERANT COMPONENTS					
FIG. 11 SOLENOID VALVE ASSEMBLY (J6 AND L2)					
1	XBFZZ	97403	13214E4224-6	. VALVE, SOLENOID ASSY	1
2	PAOZZ	96906	MS35206-222	.. SCREW, MACHINE	4
3	PAOZZ	96906	MS21044N04	.. NUT, SELF-LOCKING, HE	4
4	XBOZZ	96906	MS3102R12S-3P	.. CONNECTOR, RECEPTACL	1
5	XBOZZ	96906	MS51007-3	.. GASKET	1
6	XBOZZ	97403	13214E0696-3	.. ADAPTER	1
7	PAFZZ	93781	ORS320-24VDC	.. VALVE, SOLENOID	1
8	XBOZZ	93781	0B3-141	... NUT, COIL	1
9	XBOZZ	93781	0B3-27	... HOUSING, COIL	1
10	XAOZZ	93781	3MP25	... SLEEVE, COIL	2
11	XBOZZ	93781	0B241-2	... SPRING, COIL	1
12	PAOZZ	93781	0757051	... COIL, ELECTRICAL	1
13	XBFZZ	93781	0B234-15	... BONNET	1
14	XAFZZ	93781	P45-11	... PACKING, PREFORMED	1
15	XBFZZ	93781	0B235-7	... DIAPHRAGM	1
16	XBFZZ	93781	0B241-1	... BODY, VALVE	1

END OF FIGURE

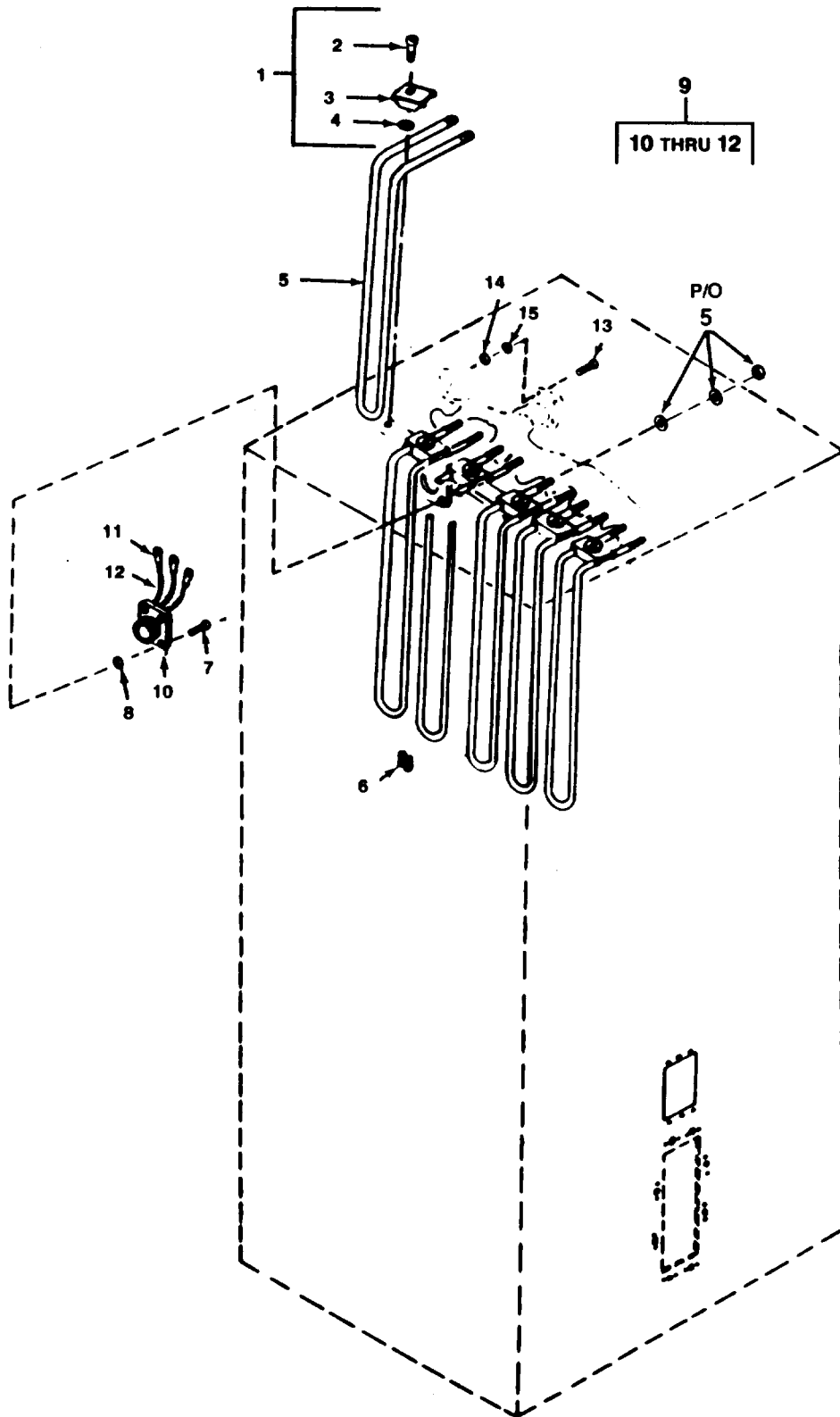


Figure 12. Heater Assembly.

SECTION II

TM9-4120-360-24P

(1) ITEM NO	(2) SMR CODE	(3) CAGEC	(4) PART NUMBER	(5) DESCRIPTION AND USABLE ON CODES (UOC)	(6) QTY
GROUP 06 HEATER ASSEMBLY					
FIG. 12 HEATER ASSEMBLY					
1	XBOZZ	97403	13214E3416	.CLAMP,BLOCK,SECTION	6
2	XBOZZ	97403	13214E3744V34	..SCREW,PANEL FASTENE	1
3	XBOZZ	94833	B93540	..CLAMP	1
4	PAOZZ	97403	13211E8337	..WASHER,LOCK	1
5	PAOZZ	97403	13211E8353-1	.HEATING ELEMENT,ELE INCLUDES ATTACHING HARDWARE	6
6	XBOZZ	97403	13211E8227	.CLIP	6
7	PAOZZ	96906	MS35206-245	.SCREW,MACHINE	4
8	PAOZZ	96906	MS21045-08	.NUT,SELF-LOCKING,HE	4
9	XBOZZ	97403	13215E9884	.SWITCH,THERMOSTATIC	1
10	PAOZZ	97403	13211E8265	..SWITCH,THERMOSTATIC	1
11	PAOZO	96906	MS25036-108	..TERMINAL,LUG	3
12	MOOZZ	97403	13215E9884/3	..WIRE,ELECTRICAL MAKE FROM P/N M5086/2-16-9, CUT TO LENGTH	3
13	PAOZZ	96906	MS35206-217	.SCREW,MACHINE	4
14	PAOZZ	96906	MS35649-242	.NUT,PLAIN,HEXAGON	4
15	PAOZZ	96906	MS35338-40	.WASHER,LOCK	4

END OF FIGURE

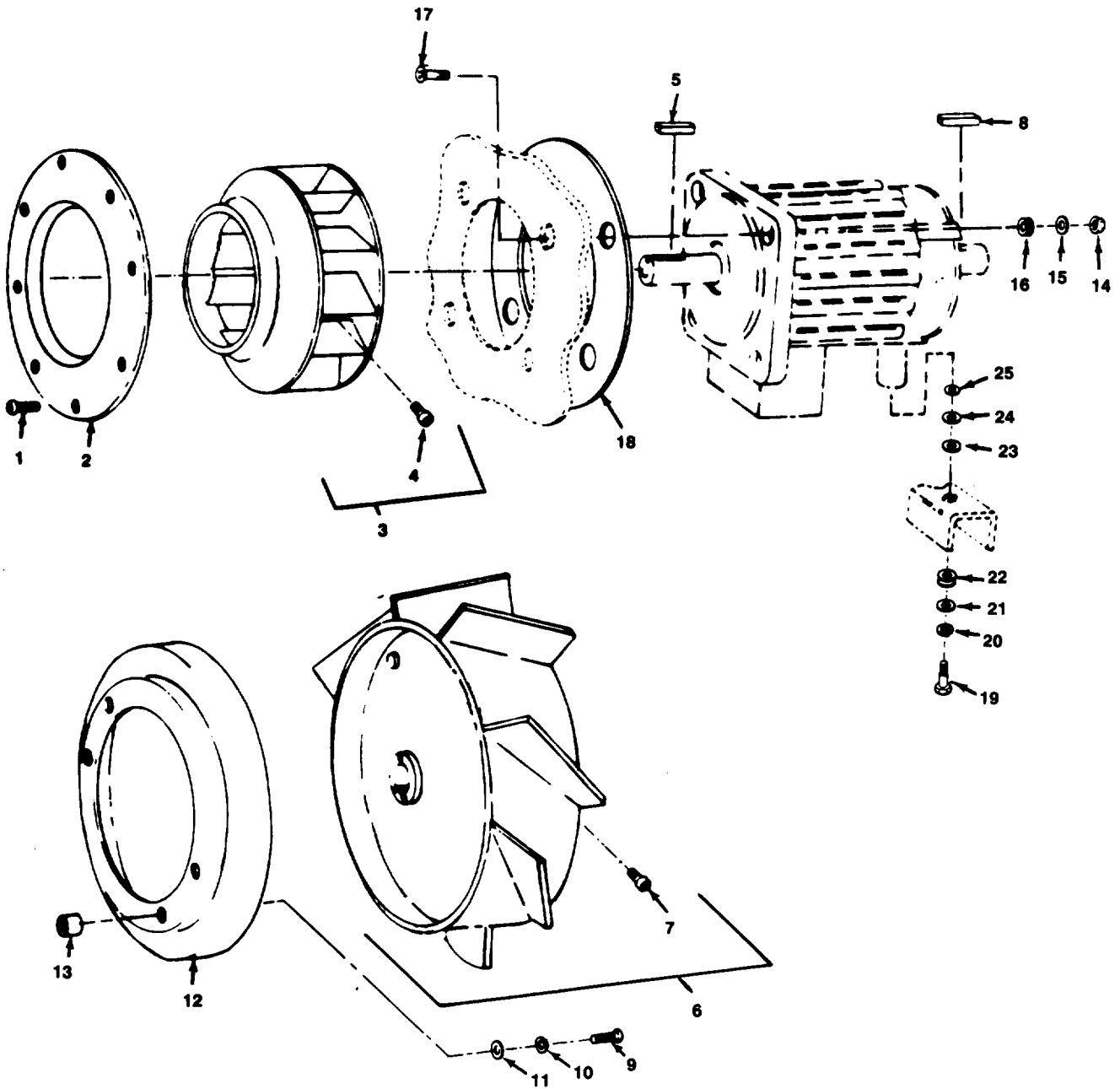


Figure 13. Fan and Baffle Assembly.

SECTION II

TM9-4120-360-24P

(1) ITEM NO	(2) SMR CODE	(3) CAGEC	(4) PART NUMBER	(5) DESCRIPTION AND USABLE ON CODES (UOC)	(6) QTY
GROUP 07 FANS AND MOTOR					
FIG. 13 FAN AND BAFFLE ASSEMBLY					
1	PAOZZ	96906	MS35206-245	.SCREW,MACHINE	8
2	XBOZZ	97403	13211E8221	.RING,INLET,FAN	1
3	PAOZZ	97403	13215E9868	.IMPELLER,FAN,CENTRI	1
4	PAOZZ	96906	MS16997-60	..SCREW,CAP,SOCKET HE	1
5	PAOZZ	96906	MS20066-143	.KEY,MACHINE	1
6	PAOZZ	97403	13226E5892	.IMPELLER,FAN,AXIAL MULTI-WINGS	1
7	PAOZZ	96906	MS16997-60	.SCREW,CAP,SOCKET HE	1
8	PAOZZ	96906	MS20066-147	.KEY,MACHINE	1
9	PAOZZ	96906	MS35206-247	.SCREW,MACHINE	4
10	PAOZZ	96906	MS35338-42	.WASHER,LOCK	4
11	PAOZZ	96906	MS27183-41	.WASHER,FLAT	4
12	XBOZZ	97403	13211E3802	.BAFFLE	1
13	XBOZZ	97403	13211E8376-5	.SPACER,SLEEVE	4
14	PAOZZ	96906	MS21045-04	.NUT,SELF-LOCKING,HE	4
15	XBOZZ	94833	A82604-11	.WASHER,FLAT	4
16	XBOZZ	97403	13211E8300-1	.SPACER,SLEEVE	4
17	PAOZZ	96906	MS35191-294	.SCREW,MACHINE	4
18	XBOZZ	97403	13211E8356	.ISOLATOR,FAN MOTOR	1
19	PAOZZ	96906	MS51975-17	.SCREW,SHOULDER	2
20	PAOZZ	96906	MS35340-46	.WASHER,LOCK	2
21	PAOZZ	96906	MS27183-14	.WASHER,FLAT	2
22	XBOZZ	97403	13211E8300-2	.BUSHING,NONMETALLIC	2
23	XBOZZ	97403	13215E9824	.WASHER,RESILIENT	2
24	PAOZZ	88044	AN970-5	.WASHER,FLAT	2
25	PAOZZ	96906	MS27183-15	.WASHER,FLAT	2

END OF FIGURE

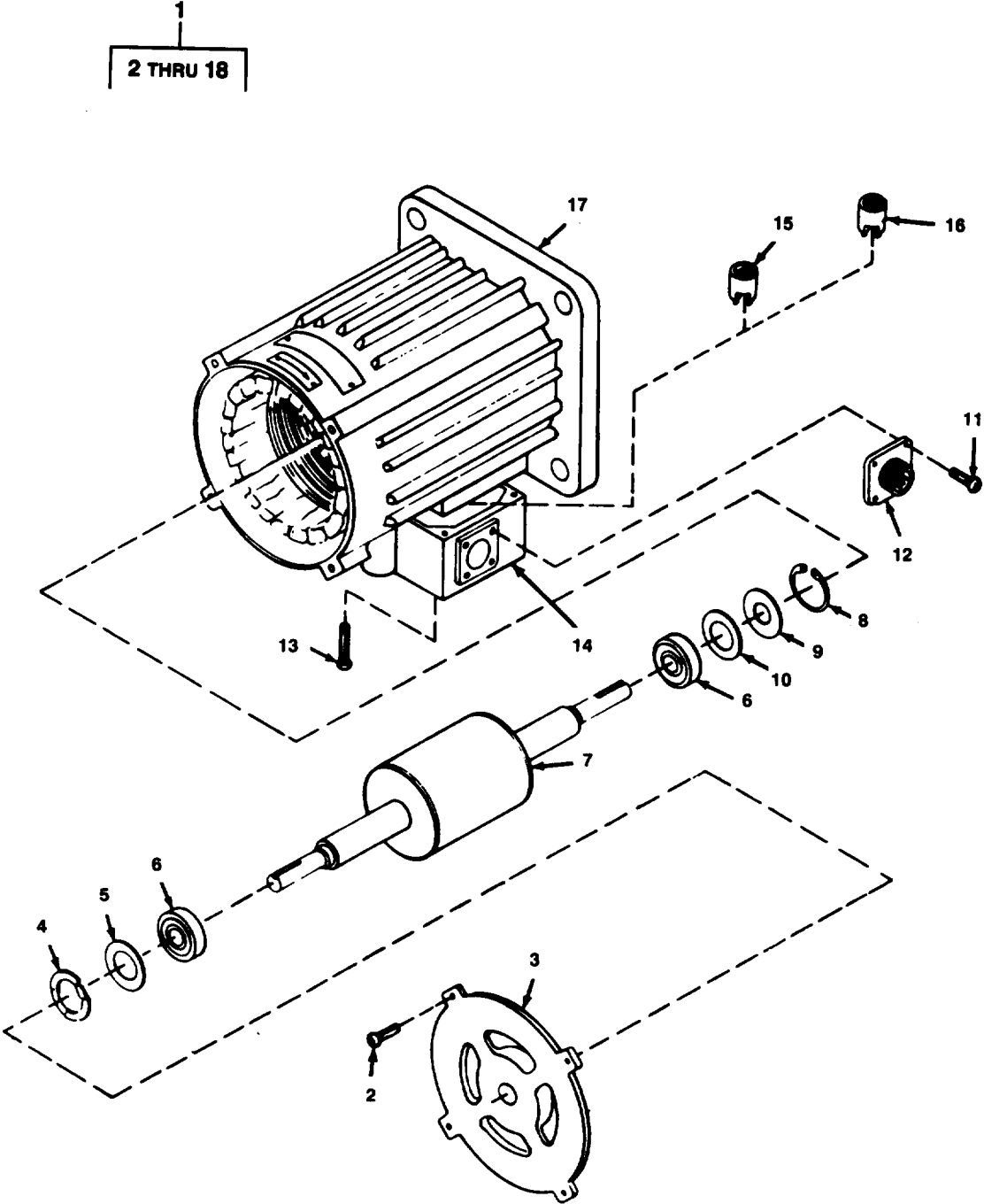


Figure 14. Motor Assembly.

SECTION II

TM9-4120-360-24P

(1) ITEM NO	(2) SMR CODE	(3) CAGEC	(4) PART NUMBER	(5) DESCRIPTION AND USABLE ON CODES (UOC)	(6) QTY
GROUP 07 FANS AND MOTOR					
FIG. 14 MOTOR ASSEMBLY					
1	PAOZZ	97403	13214E3728-15	.MOTOR,ALTERNATING C	1
2	XBOZZ	64731	02-009264-005	..SCREW,MOTOR	4
3	XBOZZ	64731	02-012947-000	..BRACKET	1
4	XBOZZ	64731	01-006424-010	..SPACER,BEARING	1
5	XBOZZ	64731	01-006189-001	..SPRING,LOAD	1
6	PAOZZ	64731	01-005248-114	..BEARING,BALL,ANNULA	2
7	XBOZZ	64731	02-013598-002	..ROTOR AND SHAFT	1
8	XBOZZ	64731	01-009648-007	..RING,RETAINER	1
9	XBOZZ	64731	01-006424-038	..SPACER,BEARING	1
10	XBOZZ	64731	01-006424-003	..SPACER,BEARING	1
11	XBOZZ	64731	02-009264-004	..SCREW,SELF-LOCKING	4
12	XBOZZ	64731	02-009685-007	..CONNECTOR	1
13	XBOZZ	64731	02-009264-003	..SCREW,SELF-LOCKING	4
14	XBOZZ	64731	02-009912-000	..BOX,TERMINAL	1
15	PAOZZ	64731	01-008773-052	..PROTECTOR,THERMAL-O	1
16	PAOZZ	64731	01-008773-053	..PROTECTOR,THERMAL-O	1
17	XBOZZ	64731	02-013598-001	..STATOR IN FRAME	1

END OF FIGURE

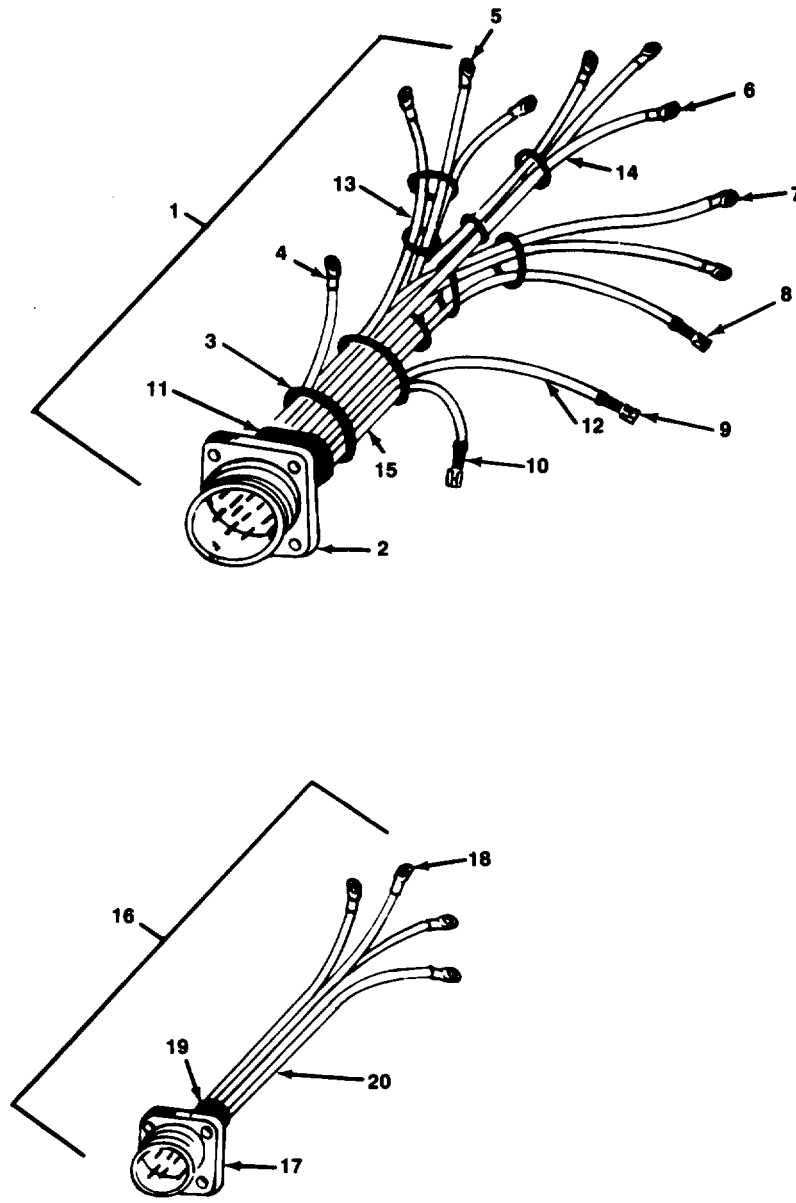


Figure 15. Junction Box Wire Harness Assemblies.

SECTION II

TM9-4120-360-24P

(1) ITEM NO	(2) SMR CODE	(3) CAGEC	(4) PART NUMBER	(5) DESCRIPTION AND USABLE ON CODES (UOC)	(6) QTY
GROUP 08 WIRING HARNESSSES					
FIG. 15 JUNCTION BOX WIRE HARNESS ASSEMBLIES					
1	AOOZZ	97403	13215E9879	..WIRING HARNESS	1
2	PAOZZ	96906	MS3102R36-7S	...CONNECTOR,RECEPTACL	1
3	XBOZZ	96906	MS3367-1-9	...STRAP,TIEDOWN	V
4	PAOZZ	96906	MS25036-112	...TERMINAL,LUG	17
5	PAOZO	96906	MS25036-108	...TERMINAL,LUG	12
6	PAOZO	96906	MS25036-106	...TERMINAL,LUG	25
7	PAOZZ	96906	MS25036-153	...TERMINAL,LUG	39
8	PAOZO	97403	13216E6192	...TERMINAL,QUICK DISC	2
9	XBOZO	97403	13216E6191-3	...TERMINAL,QUICK DISC	4
10	XBOZZ	97403	13216E6191-2	...TERMINAL,QUICK DISC	4
11	MOOZZ	81349	MIL-I-23053/5	...INSULATION SLEEVING MAKE FROM P/ N M23053/5-104-9, CUT TO LENGTH	1
12	MOOZZ	81349	MIL-23053/5	...INSULATION SLEEVING MAKE FROM P/ N M23053/5-105-9, CUT TO LENGTH	1
13	MFFZZ	81349	M5086/2-12-9	...WIRE,ELECTRICAL MAKE FROM P/N M5086/2-12-9, CUT TO LENGTH	16
14	MFFZZ	81349	M5086/2-14-9	...WIRE,ELECTRICAL MAKE FROM P/N M5086/2-14-9, CUT TO LENGTH	4
15	MOOZZ	97403	13215E9879/10	...WIRE,ELECTRICAL MAKE FROM P/N M5086/2-16-9, CUT TO LENGTH	57
16	AOOZZ	97403	13215E9866	...WIRING HARNESS	1
17	PAOZZ	96906	MS3102R22-22P	...CONNECTOR,RECEPTACL	1
18	PAOZZ	96906	MS25036-112	...TERMINAL,LUG	4
19	MOOZZ	81349	MIL-I-23053/1	...INSULATION SLEEVING MAKE FROM P/ N M23053/1-202-0, CUT TO LENGTH	1
20	PAOZZ	81349	M5086/2-10-9	...WIRE,ELECTRICAL MAKE FROM P/N M5086/2-10-9, CUT TO LENGTH	4

END OF FIGURE

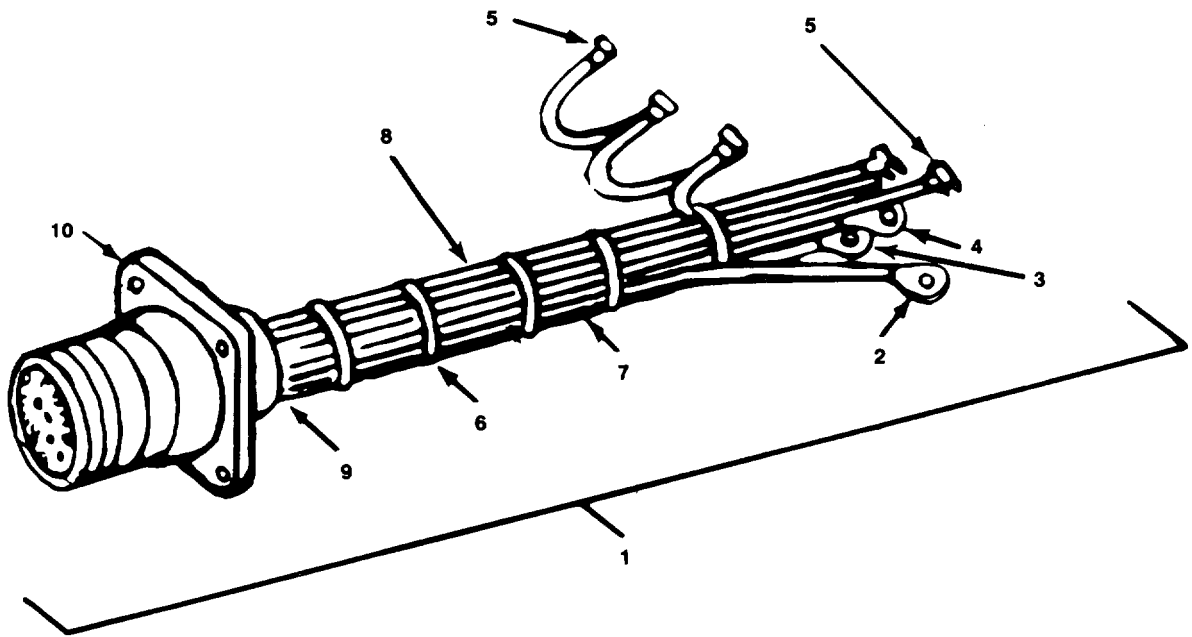


Figure 16. Wire Harness, Control Box.

SECTION II

TM9-4120-360-24P

(1) ITEM NO	(2) SMR CODE	(3) CAGEC	(4) PART NUMBER	(5) DESCRIPTION AND USABLE ON CODES (UOC)	(6) QTY
GROUP 08 WIRING HARNESSSES					
FIG. 16 WIRE HARNESS, CONTROL BOX					
1	AOZZ	97403	13215E9853	..WIRING HARNESS	1
2	PAZO	96906	MS25036-108	...TERMINAL,LUG	1
3	PAZO	96906	MS25036-106	...TERMINAL,LUG	1
4	PAZZ	96906	MS25036-153	...TERMINAL,LUG	1
5	XBOZZ	96906	13211E8288	...TERMINAL,LUG	5
6	XBOZZ	96906	MS3367-1-9	...STRAP,TIEDOWN	V
7	MOZZ	97403	13215E9853/6	...WIRE,ELECTRICAL MAKE FROM P/N M5086/2-16-9, CUT TO LENGTH	8
8	MFFZZ	81349	M5086/2-14-9	...WIRE,ELECTRICAL MAKE FROM P/N M5086/2-14-9, CUT TO LENGTH	1
9	MOZZ	81349	MIL-I-23053/1	...INSULATION SLEEVING MAKE FROM P/ N M23053/1-202-0, CUT TO LENGTH	1
10	PAZZ	96906	MS3102R28-11P	...CONNECTOR,RECEPTACL	1

END OF FIGURE

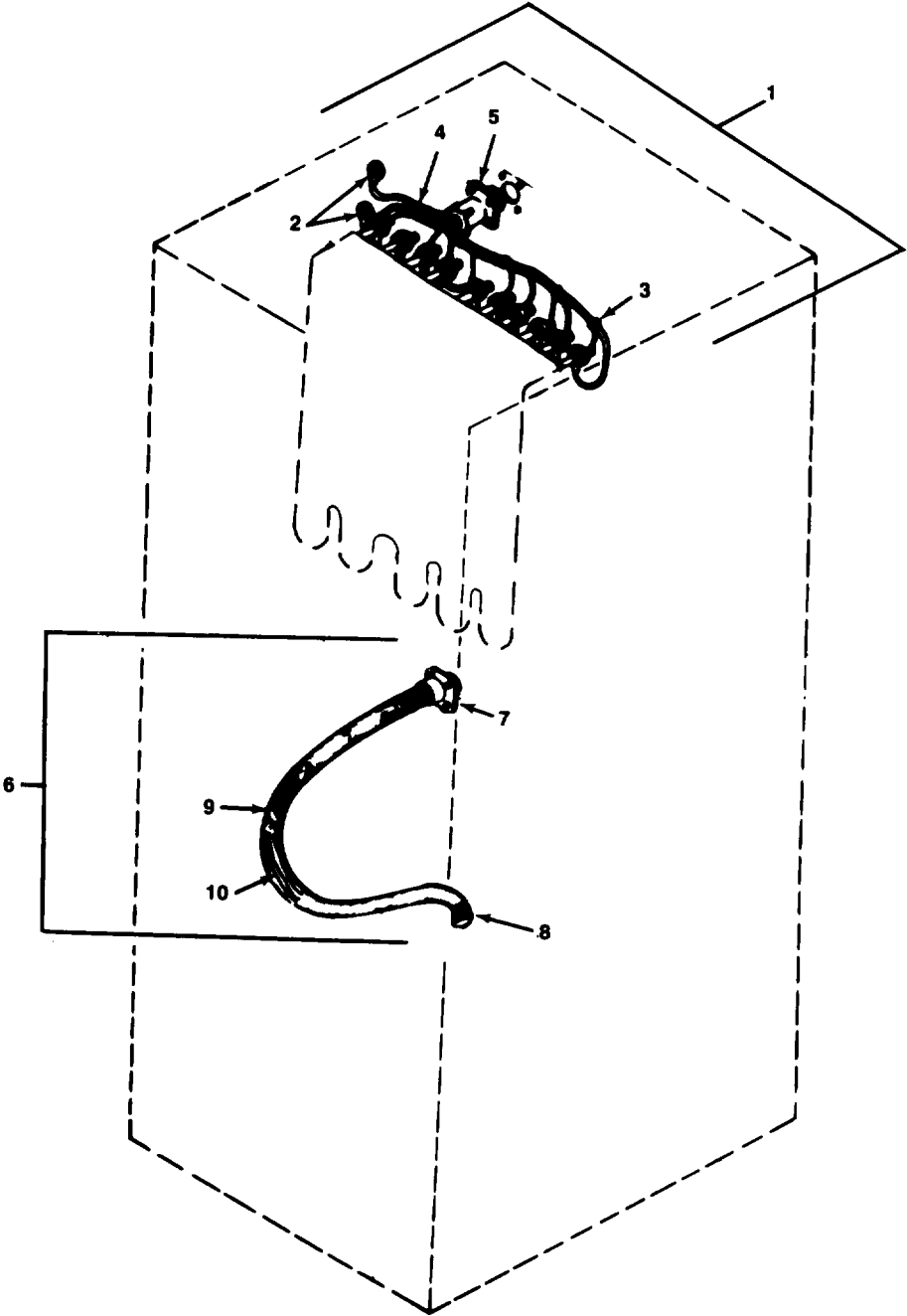


Figure 17. Heater and RFI Filter Wire Harness Assemblies.

SECTION II

TM9-4120-360-24P

(1) ITEM NO	(2) SMR CODE	(3) CAGEC	(4) PART NUMBER	(5) DESCRIPTION AND USABLE ON CODES (UOC)	(6) QTY
GROUP 08 WIRING HARNESS					
FIG. 17 HEATER AND RFI FILTER WIRE HARNESS ASSEMBLIES					
1	AOOZZ	97403	13215E9919	.WIRING HARNESS	1
2	PAOZO	96906	MS25036-108	..TERMINAL, LUG	12
3	XBOZZ	96906	MS3367-1-9	..STRAP, TIEDOWN	V
4	MOOZZ	97403	13215E9919/3	..WIRE, ELECTRICAL MAKE FROM P/N M5086/2-16-9, CUT TO LENGTH	7
5	PAOZZ	96906	MS3100R14S-6P	..CONNECTOR, RECEPTACL	1
6	AOOZZ	97403	13215E9862	.WIRING HARNESS	1
7	XDOZZ	96906	MS3100R22-22P	..CONNECTOR, RECEPTACL	1
8	PAOZZ	96906	MS3456W22-22S	..CONNECTOR, PLUG, ELEC	1
9	MOOZZ	97403	13215E9862/3	..BRAID, WIRE, TUBULAR MAKE FROM P/N QQB575R34T0500, CUT TO LENGTH	1
10	MFFZZ	81349	M5086/2-10-9	..WIRE, ELECTRICAL MAKE FROM P/N M5086/2-10-9, CUT TO LENGTH	12

END OF FIGURE

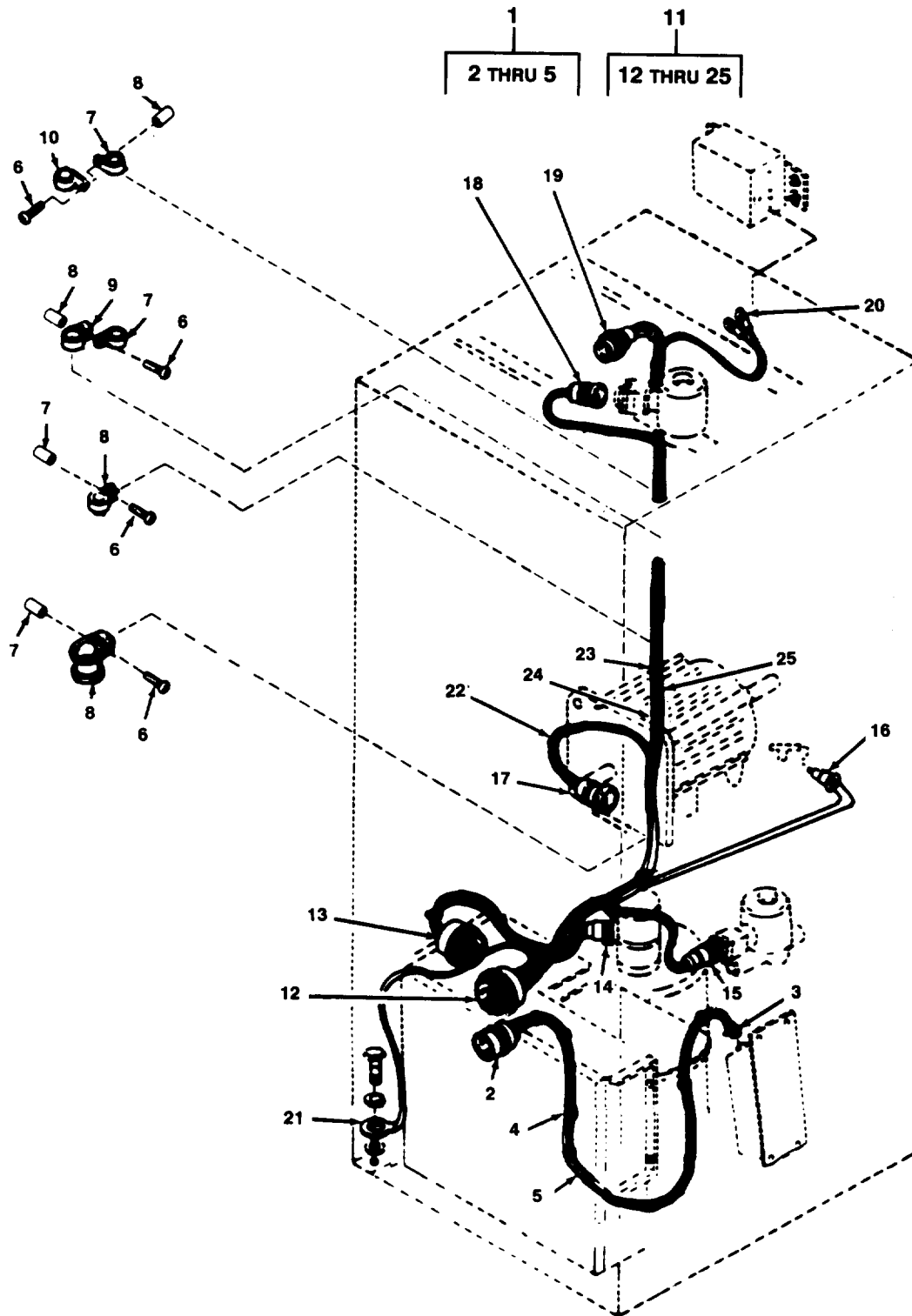


Figure 18. Wiring Harness and Clamp.

SECTION II

TM9-4120-360-24P

(1) ITEM NO	(2) SMR CODE	(3) CAGEC	(4) PART NUMBER	(5) DESCRIPTION AND USABLE ON CODES (UOC)	(6) QTY
GROUP 08 WIRING HARNESES					
FIG. 18 WIRING HARNESS AND CLAMP					
1	AFFZZ	97403	13217E2342	.WIRING HARNESS	1
2	PAOZZ	96906	MS3456W22-22S	..CONNECTOR, PLUG, ELEC	1
3	PAOZZ	96906	MS3106R22-22P	..CONNECTOR, PLUG, ELEC	1
4	XBOZZ	96906	MS3367-1-9	..STRAP, CABLE	V
5	MFFZZ	81349	M5086/1-10-9	..WIRE, ELECTRICAL MAKE FROM P/N M5086/1-10-9, CUT TO LENGTH	10
6	PAOZZ	96906	MS35207-268	.SCREW, MACHINE	4
7	XBOZZ	97403	13211E8376-1	.SPACER, SLEEVE	4
8	PAOZZ	96906	MS21919WDF6	.CLAMP, LOOP	4
9	PAOZZ	96906	MS21122-4	.CLAMP, LOOP	1
10	XBOZZ	96906	MS21104D5	.CLAMP, LOOP	1
11	PAOOO	97403	13215E9918	.WIRING HARNESS, THRE	1
12	PAOZZ	96906	MS3106R36-7P	..CONNECTOR, PLUG, ELEC	1
13	PAOZZ	96906	MS3106R28-11S	..CONNECTOR, PLUG, ELEC	1
14	PAOZZ	96906	MS3106R20-15S	..CONNECTOR, PLUG, ELEC	1
15	PAOZZ	96906	MS3106R12S-3S	..CONNECTOR, PLUG, ELEC	1
16	PAFZZ	97403	13221E9273-2	..SWITCH, PRESSURE	1
17	PAOZZ	96906	MS3106R20-27S	..CONNECTOR, PLUG, ELEC	1
18	PAOZZ	96906	MS3106R12S-3S	..CONNECTOR, PLUG, ELEC	1
19	PAOZZ	96906	MS3106R14S-6S	..CONNECTOR, PLUG, ELEC	1
20	PAOZZ	96906	MS25036-153	..TERMINAL, LUG	2
21	XBOZZ	96906	MS25036-157	..TERMINAL, LUG	1
22	XBOZZ	96906	MS3367-1-9	..STRAP, TIE DOWN	V
23	MFFZZ	81349	M5086/2-12-9	..WIRE, ELECTRICAL MAKE FROM P/N M5086/2-12-9, CUT TO LENGTH	7
24	MFFZZ	81349	M5086/2-14-9	..WIRE, ELECTRICAL MAKE FROM P/N M5086/2-14-9, CUT TO LENGTH	5
25	MOOZZ	97403	13215E9918/11	..WIRE, ELECTRICAL MAKE FROM P/N M5086/2-16-9, CUT TO LENGTH	108

END OF FIGURE

SECTION II

TM9-4120-360-24P

(1) ITEM NO	(2) SMR CODE	(3) CAGEC	(4) PART NUMBER	(5) DESCRIPTION AND USABLE ON CODES (UOC)	(6) QTY
GROUP 09 BULK MATERIALS					
FIG. BULK					
1	PAOZZ	81348	QQB575R34T0500	BRAID,WIRE	V
2	PAOZZ	81349	M23053/5-104-9	INSULATION SLEEVING	V
3	PAOZZ	81349	M23053/5-105-9	INSULATION SLEEVING	V
4	PAOZZ	81349	M23053/1-201-0	INSULATION SLEEVING	V
5	PAOZZ	81349	M23053/1-202-0	INSULATION SLEEVING	V
6	PAOZZ	81346	ASTM D1056	RUBBER SHEET,CELLUL	1
7	PAFZZ	81346	ASTM-B280-3/80D	TUBE,METALLIC	100
8	PAFZZ	81346	ASTM-B280-1/40D	TUBE,METALLIC	100
9	PAFZZ	81346	ASTM-B280-1/20D	TUBE,METALLIC	100
10	PAFZZ	81346	ASTM-B280-5/80D	TUBE,METALLIC	100
11	PAFZZ	81346	ASTM-B280-3/40D	TUBE,METALLIC	100
12	PAOZZ	81349	MIL-P-15280/2	TUBING,PLASTIC	100
13	PAOZZ	81349	M5086/1-10-9	WIRE,ELECTRICAL	100
14	PAOZZ	81349	M5086/2-16-9	WIRE,ELECTRICAL	100
15	PAOZZ	81349	M5086/2-12-9	WIRE,ELECTRICAL	100
16	PAOZZ	81349	M5086/2-14-9	WIRE,ELECTRICAL	100
17	PAOZZ	81349	M5086/2-10-9	WIRE,ELECTRICAL	100

END OF FIGURE

TM9-4120-360-24P
SECTION IV
CROSS-REFERENCE INDEXES

NATIONAL STOCK NUMBER INDEX

STOCK NUMBER	FIG	ITEM	STOCK NUMBER	FIG	ITEM
6145-00-003-9527	BULK	13	5940-00-150-4682	15	8
5945-00-007-7669	3	63	5340-00-151-5997	8	7
5310-00-014-5850	3	3		9	14
	3	39		18	9
5310-00-043-0520	8	21	5310-00-167-0767	6	5
5310-00-045-3299	2	70		13	24
	8	15	5310-00-167-0768	6	2
	9	2	5330-00-170-0127	2	57
	13	10	5310-00-187-2354	2	81
5310-00-045-4007	3	24	4730-00-189-2737	9	8
	3	38		9	28
	7	7	4730-00-189-2739	8	19
	9	7	4710-00-203-3174	BULK	10
5305-00-059-4552	3	59	5315-00-234-1856	2	27
5310-00-061-7326	3	37		2	33
	4	17	5306-00-235-4727	6	1
5306-00-068-0514	2	80	5925-00-236-2349	3	25
6680-00-073-8404	9	22	5930-00-236-2351	4	11
4820-00-073-8405	8	28	5950-00-242-9749	10	12
5340-00-078-3615	3	7		11	12
5310-00-080-6004	13	21	5905-00-252-1047	4	12
5970-00-082-3942	BULK	3	5305-00-267-8953	2	78
5935-00-087-1667	18	3	5930-00-275-7800	7	10
5310-00-087-7493	8	4	5920-00-280-3175	3	57
5310-00-088-0551	10	3	5940-00-283-5280	15	6
	11	3		16	3
5970-00-088-2975	BULK	2	5325-00-286-6047	4	2
5305-00-088-8923	8	20		9	32
5930-00-106-1972	12	10	5340-00-286-9423	8	11
5961-00-106-5259	3	4		9	64
5320-00-117-6938	3	67		18	8
	5	4	4710-00-289-0640	BULK	11
	6	28	4130-00-357-0519	2	54
	7	4	5310-00-401-3365	6	3
	8	41	3120-00-410-6718	6	4
	8	44	5970-00-419-4291	9	52
	9	70	5945-00-430-6933	3	42
	9	73	4810-00-433-0763	10	7
5330-00-119-7503	3	54		11	7
4130-00-139-3378	6	7	5310-00-481-6295	6	30
5940-00-143-4774	7	12	5950-00-493-5583	3	27
	15	7	5310-00-530-9963	2	3
	16	4		2	11
	18	20		2	42
5940-00-143-4780	12	11		2	77
	15	5	5310-00-543-2009	2	79
	16	2	5310-00-543-2410	2	38
	17	2		5	8
5940-00-143-4794	15	4		6	17
	15	18		12	15

TM9-4120-360-24P
SECTION IV
CROSS-REFERENCE INDEXES

NATIONAL STOCK NUMBER INDEX

STOCK NUMBER	FIG	ITEM	STOCK NUMBER	FIG	ITEM
6145-00-548-2920	BULK	1	5320-00-845-9501	1	7
5945-00-549-6348	3	41	5935-00-846-2329	18	17
5310-00-550-1130	3	13	5935-00-846-5602	18	12
4130-00-550-2856	9	67	5310-00-877-5798	2	46
4130-00-550-2857	8	46	4540-00-878-0103	12	5
4140-00-550-2994	13	3	5310-00-880-7744	6	6
5940-00-557-1629	3	44	5310-00-880-9344	2	18
4130-00-572-4709	8	25		3	12
6145-00-578-6604	BULK	16		3	16
6145-00-578-6605	BULK	14		12	4
6145-00-578-7513	15	20	5305-00-881-0705	13	19
	BULK	17	5310-00-889-2543	3	33
6145-00-578-7514	BULK	15		3	47
5320-00-582-3298	3	21		13	14
5320-00-582-3304	4	24	5310-00-889-2544	3	58
5310-00-582-5965	8	22		4	14
	9	57	5310-00-889-2549	3	29
5320-00-584-0672	2	7		4	6
5310-00-623-5989	3	68		12	8
	5	5	5305-00-889-2999	2	37
	8	42		5	6
	8	45		6	15
	9	71		12	13
	9	74	5305-00-889-3000	9	37
5935-00-682-0552	18	13	5305-00-889-3001	4	15
5930-00-683-1628	4	13	4730-00-908-3194	2	23
5935-00-721-0488	18	19	4820-00-909-3717	9	39
5325-00-724-7655	2	75	5930-00-911-9095	7	9
5935-00-725-4638	18	15	5930-00-923-4176	4	10
	18	18	5310-00-934-9739	2	39
5315-00-730-4564	13	5		5	7
5315-00-730-4577	13	8		6	16
5310-00-765-3197	1	4		12	14
	2	73	5310-00-934-9751	3	2
	3	30		4	19
	9	3	5310-00-950-1310	2	50
	13	11		3	34
5310-00-777-5793	6	29		3	51
5310-00-802-8544	4	20	5920-00-952-9460	3	56
5935-00-804-5816	15	17	5305-00-957-2640	13	17
5310-00-809-4061	13	25	5305-00-957-7811	8	39
5310-00-809-8546	4	18	5310-00-959-4675	8	3
5935-00-816-8646	18	14		9	61
5935-00-818-7448	16	10		13	20
4730-00-821-3037	9	35	5305-00-978-9385	9	56
	9	41	4130-00-981-6615	2	15
4730-00-822-1275	8	13	5305-00-983-6730	3	35
	9	80		3	48
5935-00-823-0272	17	5	5305-00-983-8084	13	4
5935-00-824-7883	15	2		13	7

TM9-4120-360-24P
SECTION IV
CROSS-REFERENCE INDEXES

NATIONAL STOCK NUMBER INDEX

STOCK NUMBER	FIG	ITEM	STOCK NUMBER	FIG	ITEM
5305-00-984-4976	3	50	5330-01-054-1553	3	17
5305-00-984-4979	10	2	5961-01-054-4150	3	46
	11	2	4820-01-055-1283	8	1
5305-00-984-4983	3	23	4130-01-062-0698	4	3
	9	6	5970-01-085-3431	BULK	4
5305-00-984-4988	3	62	5970-01-088-0413	BULK	5
5305-00-984-6192	4	5	4730-01-092-3835	9	5
	8	14	3110-01-094-2255	14	6
	9	85	5340-01-094-4587	2	47
5305-00-984-6193	1	3	5310-01-099-9528	2	88
	2	53	4130-01-108-0773	2	16
	9	20	5935-01-118-5714	1	1
	12	7		17	8
	13	1		18	2
5305-00-984-6195	2	55	4120-01-138-2623	18	11
	2	69	4540-01-143-4854	6	9
	3	31	9320-01-150-4085	BULK	6
	9	1	5930-01-169-5301	18	16
	13	9	5340-01-170-5181	2	58
5305-00-984-6196	2	72	4140-01-172-8793	13	6
5305-00-984-7341	2	45	5930-01-212-5842	3	9
5305-00-984-7441	2	17			
5305-00-989-6265	3	53			
	4	8			
5305-00-989-7434	8	38			
	9	65			
5305-00-989-7435	4	1			
	5	1			
5305-00-990-6444	3	6			
5305-00-993-2461	8	23			
5305-00-995-3441	8	5			
5305-00-995-3442	8	9			
	9	12			
	9	62			
	18	6			
5305-00-995-3444	3	40			
	4	21			
4130-01-011-1217	2	68			
4820-01-015-6690	9	4			
4820-01-017-4248	9	60			
5305-01-018-5599	3	11			
	3	15			
5325-01-033-0846	1	5			
6105-01-042-5688	14	1			
5975-01-045-9683	3	14			
5670-01-047-8362	2	1			
5915-01-051-2774	5	3			
4130-01-051-7426	1	6			
6110-01-052-5399	14	15			
6110-01-052-5400	14	16			

TM9-4120-360-24P
SECTION IV
CROSS-REFERENCE INDEXES

PART NUMBER INDEX		STOCK NUMBER	FIG	ITEM
CAGEC	PART NUMBER			
88044	AN960PD416	5310-00-187-2354	2	81
88044	AN970-5	5310-00-167-0767	6	5
			13	24
88044	AN970-6	5310-00-167-0768	6	2
81346	ASTM B280-3/4OD		9	76
81346	ASTM B280-3/8OD		9	19
			9	30
			9	77
81346	ASTM B280-5/8OD		9	43
81346	ASTM D1056	9320-01-150-4085	BULK	6
81346	ASTM-B280-1/2OD		8	30
			8	33
			9	33
			9	34
			9	36
			9	45
			BULK	9
81346	ASTM-B280-1/4OD		8	8
			9	10
			9	11
			9	15
			9	16
			9	25
			9	26
			BULK	8
81346	ASTM-B280-3/4OD		9	51
			9	55
		4710-00-289-0640	BULK	11
81346	ASTM-B280-3/8OD		8	12
			8	16
			8	18
			8	26
			8	29
			8	36
			8	37
			9	46
			9	83
			9	90
			BULK	7
81346	ASTM-B280-5/32OD		9	86
			9	87
			9	88
81346	ASTM-B280-5/8OD		9	44
			9	49
		4710-00-203-3174	BULK	10
10855	AU02AA131		6	21
94833	A54477-1		9	78
94833	A82604-11		13	15
94833	B93540		12	3
81349	F09B250V1-6/10A	5920-00-280-3175	3	57
10855	KA90EC080		6	8

TM9-4120-360-24P
SECTION IV
CROSS-REFERENCE INDEXES

PART NUMBER INDEX		STOCK NUMBER	FIG	ITEM
CAGEC	PART NUMBER			
81349	MIL-I-23053/1		15	19
			16	9
81349	MIL-I-23053/5		15	11
81349	MIL-I-24391	5970-00-419-4291	9	52
81349	MIL-P-15280/2		9	53
			BULK	12
81349	MIL-23053/5		15	12
96906	MS15795-709	5310-00-802-8544	4	20
96906	MS15795-710	5310-00-543-2009	2	79
96906	MS16997-60	5305-00-983-8084	13	4
			13	7
96906	MS16997-62	5305-00-978-9385	9	56
96906	MS20066-143	5315-00-730-4564	13	5
96906	MS20066-147	5315-00-730-4577	13	8
96906	MS20426AD3-4	5320-00-117-6938	3	67
			5	4
			6	28
			7	4
			8	41
			8	44
			9	70
			9	73
96906	MS20426AD3-6	5320-00-584-0672	2	7
96906	MS20470AD2-4		6	13
96906	MS20470AD4-3		2	85
96906	MS20470AD4-4		2	49
96906	MS20600AD4W-2	5320-00-582-3304	4	24
96906	MS20600B4W2	5320-00-582-3298	3	21
96906	MS20600B4W4	5320-00-845-9501	1	7
96906	MS20601AD4W2		3	70
96906	MS21044D3	5310-00-877-5798	2	46
96906	MS21044N04	5310-00-088-0551	10	3
			11	3
96906	MS21045-04	5310-00-889-2543	3	33
			3	47
			13	14
96906	MS21045-06	5310-00-889-2544	3	58
			4	14
96906	MS21045-08	5310-00-889-2549	3	29
			4	6
			12	8
96906	MS21045-3	5310-00-061-7326	3	37
			4	17
96906	MS21059L4	5310-00-777-5793	6	29
96906	MS21104D10		9	42
96906	MS21104D5		18	10
96906	MS21104D8		8	32
96906	MS21122-4	5340-00-151-5997	8	7
			9	14
			18	9
96906	MS21315-22		9	38

TM9-4120-360-24P
SECTION IV
CROSS-REFERENCE INDEXES

PART NUMBER INDEX		STOCK NUMBER	FIG	ITEM
CAGEC	PART NUMBER			
96906	MS21322-33	5340-00-078-3615	3	7
96906	MS21919DFH6		4	9
96906	MS21919WDF6	5340-00-286-9423	8	11
			9	64
			18	8
96906	MS24192D1	5945-00-549-6348	3	41
96906	MS24523-22	5930-00-683-1628	4	13
96906	MS24621-18		6	10
96906	MS24665-155	5315-00-234-1856	2	27
			2	33
96906	MS24693S272	5305-00-957-7811	8	39
96906	MS25036-106	5940-00-283-5280	15	6
			16	3
96906	MS25036-108	5940-00-143-4780	12	11
			15	5
			16	2
			17	2
96906	MS25036-112	5940-00-143-4794	15	4
			15	18
96906	MS25036-149	5940-00-557-1629	3	44
96906	MS25036-153	5940-00-143-4774	7	12
			15	7
			16	4
			18	20
96906	MS25036-157		18	21
96906	MS27130A13K	5310-01-099-9528	2	88
96906	MS27130S26K		6	32
96906	MS27183-11		3	65
96906	MS27183-13	5310-00-087-7493	8	4
96906	MS27183-14	5310-00-080-6004	13	21
96906	MS27183-15	5310-00-809-4061	13	25
96906	MS27183-4	5310-00-950-1310	2	50
			3	34
			3	51
96906	MS27183-41	5310-00-765-3197	1	4
			2	73
			3	30
			9	3
			13	11
96906	MS27183-42	5310-00-014-5850	3	3
			3	39
96906	MS27183-8	5310-00-809-8546	4	18
96906	MS3100R14S-6P	5935-00-823-0272	17	5
96906	MS3100R22-22P		17	7
96906	MS3102R12S-3P		10	4
			11	4
96906	MS3102R20-15P		6	19
96906	MS3102R22-22P	5935-00-804-5816	15	17
96906	MS3102R28-11P	5935-00-818-7448	16	10
96906	MS3102R36-7S	5935-00-824-7883	15	2
96906	MS3106R12S-3S	5935-00-725-4638	18	15

TM9-4120-360-24P
SECTION IV
CROSS-REFERENCE INDEXES

PART NUMBER INDEX		STOCK NUMBER	FIG	ITEM
CAGEC	PART NUMBER			
96906	MS3106R12S-3S	5935-00-725-4638	18	18
96906	MS3106R14S-6S	5935-00-721-0488	18	19
96906	MS3106R20-15S	5935-00-816-8646	18	14
96906	MS3106R20-27S	5935-00-846-2329	18	17
96906	MS3106R22-22P	5935-00-087-1667	18	3
96906	MS3106R28-11S	5935-00-682-0552	18	13
96906	MS3106R36-7P	5935-00-846-5602	18	12
96906	MS3367-1-9		15	3
			16	6
			17	3
			18	4
			18	22
96906	MS3456W22-22S	5935-01-118-5714	1	1
			17	8
			18	2
96906	MS35190-237	5305-00-059-4552	3	59
96906	MS35190-238		7	2
96906	MS35191-273	5305-00-984-7341	2	45
96906	MS35191-294	5305-00-957-2640	13	17
96906	MS35206-217	5305-00-889-2999	2	37
			5	6
			6	15
			12	13
96906	MS35206-218	5305-00-983-6730	3	35
			3	48
96906	MS35206-219	5305-00-984-4976	3	50
96906	MS35206-222	5305-00-984-4979	10	2
			11	2
96906	MS35206-226	5305-00-984-4983	3	23
			9	6
96906	MS35206-227		7	6
96906	MS35206-228	5305-00-984-4988	3	62
96906	MS35206-230		7	1
		5305-00-889-3000	9	37
96906	MS35206-231	5305-00-889-3001	4	15
96906	MS35206-244	5305-00-984-6192	4	5
			8	14
			9	85
96906	MS35206-245	5305-00-984-6193	1	3
			2	53
			9	20
			12	7
			13	1
96906	MS35206-247	5305-00-984-6195	2	55
			2	69
			3	31
			9	1
			13	9
96906	MS35206-248	5305-00-984-6196	2	72
96906	MS35207-261	5305-00-990-6444	3	6
96906	MS35207-262	5305-00-989-6265	3	53

TM9-4120-360-24P
SECTION IV
CROSS-REFERENCE INDEXES

PART NUMBER INDEX		STOCK NUMBER	FIG	ITEM
CAGEC	PART NUMBER			
96906	MS35207-262	5305-00-989-6265	4	8
96906	MS35207-263	5305-00-989-7434	8	38
			9	65
96906	MS35207-264	5305-00-989-7435	4	1
			5	1
96906	MS35207-266	5305-00-995-3444	3	40
			4	21
96906	MS35207-268	5305-00-995-3442	8	9
			9	12
			9	62
			18	6
96906	MS35207-269	5305-00-995-3441	8	5
96906	MS35207-281	5305-00-993-2461	8	23
96906	MS35207-285	5305-00-088-8923	8	20
96906	MS35333-40	5310-00-550-1130	3	13
96906	MS35338-22		6	11
96906	MS35338-40	5310-00-543-2410	2	38
			5	8
			6	17
			12	15
96906	MS35338-41	5310-00-045-4007	3	24
			3	38
			7	7
			9	7
96906	MS35338-42	5310-00-045-3299	2	70
			8	15
			9	2
			13	10
96906	MS35338-44	5310-00-582-5965	8	22
			9	57
96906	MS35340-46	5310-00-959-4675	8	3
			9	61
			13	20
96906	MS35489-1	5325-00-286-6047	4	2
			9	32
96906	MS35489-11		9	31
96906	MS35489-37		6	23
96906	MS35489-6		7	8
96906	MS35489-7		9	9
96906	MS35489-8		9	27
96906	MS35649-242	5310-00-934-9739	2	39
			5	7
			6	16
			12	14
96906	MS35650-302	5310-00-934-9751	3	2
			4	19
96906	MS35650-3252	5310-00-043-0520	8	21
96906	MS35792-1	5340-01-094-4587	2	47
96906	MS35842-11	4730-00-908-3194	2	23
96906	MS35871-2-2F		9	79
96906	MS35872-2	4730-00-189-2737	9	8

TM9-4120-360-24P
SECTION IV
CROSS-REFERENCE INDEXES

PART NUMBER INDEX

CAGEC	PART NUMBER	STOCK NUMBER	FIG	ITEM
96906	MS35872-2	4730-00-189-2737	9	28
96906	MS35872-3	4730-00-189-2739	8	19
96906	MS35919-23		9	84
96906	MS51007-1		6	18
96906	MS51007-10		4	16
96906	MS51007-13		3	32
96906	MS51007-3		10	5
			11	5
96906	MS51007-8		3	36
			5	9
96906	MS51967-5	5310-00-880-7744	6	6
96906	MS51975-17	5305-00-881-0705	13	19
96906	MS90727-5	5305-00-267-8953	2	78
96906	MS90727-7	5306-00-068-0514	2	80
96906	MS91528-2P4B		4	4
81349	M23053/1-201-0	5970-01-085-3431	BULK	4
81349	M23053/1-202-0	5970-01-088-0413	BULK	5
81349	M23053/5-104-9	5970-00-088-2975	BULK	2
81349	M23053/5-105-9	5970-00-082-3942	BULK	3
81349	M5086/1-10-9		18	5
		6145-00-003-9527	BULK	13
81349	M5086/2-10-9	6145-00-578-7513	15	20
			17	10
			BULK	17
81349	M5086/2-12-9		15	13
			18	23
		6145-00-578-7514	BULK	15
81349	M5086/2-14-9		15	14
			16	8
			18	24
		6145-00-578-6604	BULK	16
81349	M5086/2-16-9	6145-00-578-6605	BULK	14
14852	M7160	4130-00-550-2857	8	46
80205	NAS1031-D06		7	5
80205	NAS1031A3	5310-00-623-5989	3	68
			5	5
			8	42
			8	45
			9	71
			9	74
80205	NAS1329S06KB75		2	61
80205	NAS1329S08KB120	5310-00-481-6295	6	30
80205	NAS1329S08KB75		2	60
80205	NAS1523C08F	5330-00-170-0127	2	57
80205	NAS1523C3F	5330-00-119-7503	3	54
			9	68
80205	NAS1523C4F	5330-01-054-1553	3	17
93781	P45-11		10	14
			11	14
81348	QQB575R34T0500	6145-00-548-2920	BULK	1
81349	RCR32G274JS	5905-00-252-1047	4	12

TM9-4120-360-24P
SECTION IV
CROSS-REFERENCE INDEXES

PART NUMBER INDEX		STOCK NUMBER	FIG	ITEM
CAGEC	PART NUMBER			
98897	STSEC007AS21		2	2
			2	10
87358	SW1230-21	4540-01-143-4854	6	9
81349	TY37TB6		3	52
41947	W2621		9	40
93781	0B234-15		10	13
			11	13
93781	0B235-7		10	15
			11	15
93781	0B241-1		10	16
			11	16
93781	0B241-2		10	11
			11	11
93781	0B3-141		10	8
			11	8
93781	0B3-27		10	9
			11	9
93781	ORS320-24VDC	4810-00-433-0763	10	7
			11	7
64731	01-005248-114	3110-01-094-2255	14	6
64731	01-006189-001		14	5
64731	01-006424-003		14	10
64731	01-006424-010		14	4
64731	01-006424-038		14	9
64731	01-008773-052	6110-01-052-5399	14	15
64731	01-008773-053	6110-01-052-5400	14	16
64731	01-009648-007		14	8
64731	02-009264-003		14	13
64731	02-009264-004		14	11
64731	02-009264-005		14	2
64731	02-009685-007		14	12
64731	02-009912-000		14	14
64731	02-012947-000		14	3
64731	02-013598-001		14	17
64731	02-013598-002		14	7
93781	0757051	5950-00-242-9749	10	12
			11	12
10855	1RG4076C		6	12
10855	1RG5212C		6	14
97403	13211E3784		3	61
97403	13211E3793-4	4130-00-139-3378	6	7
97403	13211E3799-1		9	17
97403	13211E3799-3	4730-00-822-1275	8	13
			9	80
97403	13211E3799-4		9	82
97403	13211E3799-8		9	81
97403	13211E3800	4820-00-909-3717	9	39
97403	13211E3802		13	12
97403	13211E3895-14		6	31
97403	13211E4043-12		8	31
97403	13211E4043-20		9	48

TM9-4120-360-24P
SECTION IV
CROSS-REFERENCE INDEXES

PART NUMBER INDEX		STOCK NUMBER	FIG	ITEM
CAGEC	PART NUMBER			
97403	13211E4043-7		8	17
97403	13211E8166	5306-00-235-4727	6	1
97403	13211E8169	3120-00-410-6718	6	4
97403	13211E8170	5310-00-401-3365	6	3
97403	13211E8178		6	27
97403	13211E8183		2	71
97403	13211E8191		2	86
97403	13211E8210		2	4
97403	13211E8215		1	12
97403	13211E8216		1	14
97403	13211E8218	6680-00-073-8404	9	22
97403	13211E8221		13	2
97403	13211E8224	4130-00-981-6615	2	15
97403	13211E8227		12	6
97403	13211E8233		9	58
97403	13211E8242		9	23
97403	13211E8245		9	21
97403	13211E8255		9	24
97403	13211E8265	5930-00-106-1972	12	10
96906	13211E8288		16	5
97403	13211E8300-1		13	16
97403	13211E8300-2		13	22
97403	13211E8301-1	5930-00-923-4176	4	10
97403	13211E8305		2	83
97403	13211E8319		2	87
97403	13211E8322		2	84
97403	13211E8323		2	24
97403	13211E8337	5310-00-880-9344	2	18
			3	12
			3	16
			12	4
97403	13211E8353-1	4540-00-878-0103	12	5
97403	13211E8356		13	18
97403	13211E8369	4820-00-073-8405	8	28
97403	13211E8370		9	47
97403	13211E8376-1		8	10
			9	13
			9	63
			18	7
97403	13211E8376-3		8	2
			9	29
97403	13211E8376-5		13	13
97403	13211E8376-8		8	6
97403	13211E8382		3	71
97403	13211E8386	5310-00-530-9963	2	3
			2	11
			2	42
			2	77
97403	13211E8394-1		9	59
97403	13211E8404	5930-00-275-7800	7	10
97403	13211E8406-2		8	24

TM9-4120-360-24P
SECTION IV
CROSS-REFERENCE INDEXES

PART NUMBER INDEX CAGEC	PART NUMBER	STOCK NUMBER	FIG	ITEM
97403	13211E8410		2	30
			2	36
97403	13211E8411		2	29
			2	35
97403	13211E8412		2	28
			2	34
97403	13213E0636		3	49
97403	13214E0696-3		10	6
			11	6
97403	13214E3411-3		8	27
			9	18
97403	13214E3416		12	1
97403	13214E3471-2		2	52
97403	13214E3471-5		2	40
97403	13214E3647-3	5325-01-033-0846	1	5
97403	13214E3652	5961-00-106-5259	3	64
97403	13214E3685-2		3	28
97403	13214E3728-15	6105-01-042-5688	14	1
97403	13214E3744V34		12	2
97403	13214E3744W34	5305-00-984-7441	2	17
97403	13214E3744W5	5305-01-018-5599	3	11
			3	15
97403	13214E3762		4	23
97403	13214E3785-1	4820-01-055-1283	8	1
97403	13214E3793	4130-00-572-4709	8	25
97403	13214E3798-3		8	35
97403	13214E3811		3	60
97403	13214E3818-5	5950-00-493-5583	3	27
97403	13214E3986-5		9	89
97403	13214E4224-5		10	1
97403	13214E4224-6		11	1
97403	13214E4309	5930-00-911-9095	7	9
97403	13215E9822		3	26
97403	13215E9823		2	76
97403	13215E9824		13	23
97403	13215E9825-1		2	82
97403	13215E9827		9	69
97403	13215E9832		2	48
97403	13215E9836	4130-00-550-2856	9	67
97403	13215E9839	4820-01-017-4248	9	60
97403	13215E9841		7	3
97403	13215E9844		1	10
97403	13215E9847		1	8
97403	13215E9852		1	9
97403	13215E9853		16	1
97403	13215E9853/6		16	7
97403	13215E9854	5670-01-047-8362	2	1
97403	13215E9854-2		2	5
97403	13215E9854-3		2	6
97403	13215E9855-1		1	2
97403	13215E9857		2	9

TM9-4120-360-24P
SECTION IV
CROSS-REFERENCE INDEXES

PART NUMBER INDEX CAGEC	PART NUMBER	STOCK NUMBER	FIG	ITEM
97403	13215E9857-2		2	13
97403	13215E9857-3		2	14
97403	13215E9858	4130-00-357-0519	2	54
97403	13215E9861		7	11
97403	13215E9861/1		7	13
97403	13215E9862		17	6
97403	13215E9862/3		17	9
97403	13215E9863		2	56
97403	13215E9864-5		9	50
97403	13215E9865		6	25
97403	13215E9866		15	16
97403	13215E9867		2	74
97403	13215E9868	4140-00-550-2994	13	3
97403	13215E9873	4130-01-108-0773	2	16
97403	13215E9873-1		2	19
97403	13215E9878-1		2	51
97403	13215E9879		15	1
97403	13215E9879/10		15	15
97403	13215E9881		3	43
97403	13215E9881-2		3	45
97403	13215E9884		12	9
97403	13215E9884/3		12	12
97403	13215E9887		8	43
97403	13215E9888		8	40
97403	13215E9892	5340-01-170-5181	2	58
97403	13215E9892-1		2	59
97403	13215E9892-13		2	65
97403	13215E9892-2		2	62
97403	13215E9892-4		2	63
97403	13215E9892-5		2	66
97403	13215E9893	5975-01-045-9683	3	14
97403	13215E9893-1		3	18
97403	13215E9893-2		3	19
			3	20
97403	13215E9898		9	72
97403	13215E9909-10		2	41
97403	13215E9909-5	5325-00-724-7655	2	75
97403	13215E9917		1	13
97403	13215E9918	4120-01-138-2623	18	11
97403	13215E9918/11		18	25
97403	13215E9919		17	1
97403	13215E9919/3		17	4
97403	13215E9921	5945-00-430-6933	3	42
97403	13216E6176-3	4730-00-821-3037	9	35
			9	41
97403	13216E6182-3	5945-00-007-7669	3	63
97403	13216E6190-5		9	54
97403	13216E6191-2		15	10
97403	13216E6191-3		15	9
97403	13216E6192	5940-00-150-4682	15	8
97403	13216E6201-1	5930-00-236-2351	4	11

TM9-4120-360-24P
SECTION IV
CROSS-REFERENCE INDEXES

PART NUMBER INDEX CAGEC	PART NUMBER	STOCK NUMBER	FIG	ITEM
97403	13216E6205-3	5925-00-236-2349	3	25
97403	13216E7689	5961-01-054-4150	3	46
97403	13217E2341		3	22
97403	13217E2342		18	1
97403	13217E2343		2	43
97403	13217E2343/4		2	44
97403	13217E2344		2	8
97403	13217E2346	4130-01-051-7426	1	6
97403	13217E2364-4		3	69
97403	13217E2366-1		3	10
97403	13217E2367		3	66
97403	13217E2368		3	55
97403	13217E6815-3		3	8
97403	13217E6816		3	1
97403	13217E6817		3	4
97403	13217E6853		2	12
97403	13218E6857		9	75
97403	13218E8492-1	4130-01-062-0698	4	3
97403	13218E8493		4	22
97403	13218E8494		4	7
97403	13218E8495		4	25
97403	13218E9877	5915-01-051-2774	5	3
97403	13218E9878-3		2	64
97403	13218E9879-2		2	20
			2	21
			2	22
97403	13218E9997-1		2	67
			6	26
97403	13219E2647	4130-01-011-1217	2	68
97403	13219E2648		9	66
97403	13219E2681		2	31
97403	13219E2681-1		2	32
97403	13219E2682		2	25
97403	13219E2682-1		2	26
97403	13219E9499-1	4820-01-015-6690	9	4
97403	13219E9540	4730-01-092-3835	9	5
97403	13220E5615-1	5930-01-212-5842	3	9
97403	13220E5616		3	5
97403	13220E5617		1	15
97403	13220E5618		5	2
97403	13220E5619		8	34
97403	13221E9273-2	5930-01-169-5301	18	16
97403	13226E5892	4140-01-172-8793	13	6
10855	2RG5222C		6	22
14859	20640L15-88-135		6	24
93781	3MP25		10	10
			11	10
56232	338591-4	5920-00-952-9460	3	56
10855	8RG5004B		6	20
94833	91111		1	11

TM9-4120-360-24P
SECTION IV
CROSS-REFERENCE INDEXES

FIGURE AND ITEM NUMBER INDEX

FIG	ITEM	STOCK NUMBER	CAGEC	PART NUMBER
BULK	1	6145-00-548-2920	81348	QQB575R34T0500
BULK	2	5970-00-088-2975	81349	M23053/5-104-9
BULK	3	5970-00-082-3942	81349	M23053/5-105-9
BULK	4	5970-01-085-3431	81349	M23053/1-201-0
BULK	5	5970-01-088-0413	81349	M23053/1-202-0
BULK	6	9320-01-150-4085	81346	ASTM D1056
BULK	7		81346	ASTM-B280-3/8OD
BULK	8		81346	ASTM-B280-1/4OD
BULK	9		81346	ASTM-B280-1/2OD
BULK	10	4710-00-203-3174	81346	ASTM-B280-5/8OD
BULK	11	4710-00-289-0640	81346	ASTM-B280-3/4OD
BULK	12		81349	MIL-P-15280/2
BULK	13	6145-00-003-9527	81349	M5086/1-10-9
BULK	14	6145-00-578-6605	81349	M5086/2-16-9
BULK	15	6145-00-578-7514	81349	M5086/2-12-9
BULK	16	6145-00-578-6604	81349	M5086/2-14-9
BULK	17	6145-00-578-7513	81349	M5086/2-10-9
1	1	5935-01-118-5714	96906	MS3456W22-22S
1	2		97403	13215E9855-1
1	3	5305-00-984-6193	96906	MS35206-245
1	4	5310-00-765-3197	96906	MS27183-41
1	5	5325-01-033-0846	97403	13214E3647-3
1	6	4130-01-051-7426	97403	13217E2346
1	7	5320-00-845-9501	96906	MS20600B4W4
1	8		97403	13215E9847
1	9		97403	13215E9852
1	10		97403	13215E9844
1	11		94833	91111
1	12		97403	13211E8215
1	13		97403	13215E9917
1	14		97403	13211E8216
1	15		97403	13220E5617
2	1	5670-01-047-8362	97403	13215E9854
2	2		98897	STSEC007AS21
2	3	5310-00-530-9963	97403	13211E8386
2	4		97403	13211E8210
2	5		97403	13215E9854-2
2	6		97403	13215E9854-3
2	7	5320-00-584-0672	96906	MS20426AD3-6
2	8		97403	13217E2344
2	9		97403	13215E9857
2	10		98897	STSEC007AS21
2	11	5310-00-530-9963	97403	13211E8386
2	12		97403	13217E6853
2	13		97403	13215E9857-2
2	14		97403	13215E9857-3
2	15	4130-00-981-6615	97403	13211E8224
2	16	4130-01-108-0773	97403	13215E9873
2	17	5305-00-984-7441	97403	13214E3744W34
2	18	5310-00-880-9344	97403	13211E8337
2	19		97403	13215E9873-1

TM9-4120-360-24P
SECTION IV
CROSS-REFERENCE INDEXES

FIGURE AND ITEM NUMBER INDEX

FIG	ITEM	STOCK NUMBER	CAGEC	PART NUMBER
2	20		97403	13218E9879-2
2	21		97403	13218E9879-2
2	22		97403	13218E9879-2
2	23	4730-00-908-3194	96906	MS35842-11
2	24		97403	13211E8323
2	25		97403	13219E2682
2	26		97403	13219E2682-1
2	27	5315-00-234-1856	96906	MS24665-155
2	28		97403	13211E8412
2	29		97403	13211E8411
2	30		97403	13211E8410
2	31		97403	13219E2681
2	32		97403	13219E2681-1
2	33	5315-00-234-1856	96906	MS24665-155
2	34		97403	13211E8412
2	35		97403	13211E8411
2	36		97403	13211E8410
2	37	5305-00-889-2999	96906	MS35206-217
2	38	5310-00-543-2410	96906	MS35338-40
2	39	5310-00-934-9739	96906	MS35649-242
2	40		97403	13214E3471-5
2	41		97403	13215E9909-10
2	42	5310-00-530-9963	97403	13211E8386
2	43		97403	13217E2343
2	44		97403	13217E2343/4
2	45	5305-00-984-7341	96906	MS35191-273
2	46	5310-00-877-5798	96906	MS21044D3
2	47	5340-01-094-4587	96906	MS35792-1
2	48		97403	13215E9832
2	49		96906	MS20470AD4-4
2	50	5310-00-950-1310	96906	MS27183-4
2	51		97403	13215E9878-1
2	52		97403	13214E3471-2
2	53	5305-00-984-6193	96906	MS35206-245
2	54	4130-00-357-0519	97403	13215E9858
2	55	5305-00-984-6195	96906	MS35206-247
2	56		97403	13215E9863
2	57	5330-00-170-0127	80205	NAS1523C08F
2	58	5340-01-170-5181	97403	13215E9892
2	59		97403	13215E9892-1
2	60		80205	NAS1329S08KB75
2	61		80205	NAS1329S06KB75
2	62		97403	13215E9892-2
2	63		97403	13215E9892-4
2	64		97403	13218E9878-3
2	65		97403	13215E9892-13
2	66		97403	13215E9892-5
2	67		97403	13218E9997-1
2	68	4130-01-011-1217	97403	13219E2647
2	69	5305-00-984-6195	96906	MS35206-247
2	70	5310-00-045-3299	96906	MS35338-42

TM9-4120-360-24P
SECTION IV
CROSS-REFERENCE INDEXES

FIGURE AND ITEM NUMBER INDEX

FIG	ITEM	STOCK NUMBER	CAGEC	PART NUMBER
2	71		97403	13211E8183
2	72	5305-00-984-6196	96906	MS35206-248
2	73	5310-00-765-3197	96906	MS27183-41
2	74		97403	13215E9867
2	75	5325-00-724-7655	97403	13215E9909-5
2	76		97403	13215E9823
2	77	5310-00-530-9963	97403	13211E8386
2	78	5305-00-267-8953	96906	MS90727-5
2	79	5310-00-543-2009	96906	MS15795-710
2	80	5306-00-068-0514	96906	MS90727-7
2	81	5310-00-187-2354	88044	AN960PD416
2	82		97403	13215E9825-1
2	83		97403	13211E8305
2	84		97403	13211E8322
2	85		96906	MS20470AD4-3
2	86		97403	13211E8191
2	87		97403	13211E8319
2	88	5310-01-099-9528	96906	MS27130A13K
3	1		97403	13217E6816
3	2	5310-00-934-9751	96906	MS35650-302
3	3	5310-00-014-5850	96906	MS27183-42
3	4		97403	13217E6817
3	5		97403	13220E5616
3	6	5305-00-990-6444	96906	MS35207-261
3	7	5340-00-078-3615	96906	MS21322-33
3	8		97403	13217E6815-3
3	9	5930-01-212-5842	97403	13220E5615-1
3	10		97403	13217E2366-1
3	11	5305-01-018-5599	97403	13214E3744W5
3	12	5310-00-880-9344	9740	13211E8337
3	13	5310-00-550-1130	96906	MS35333-40
3	14	5975-01-045-9683	97403	13215E9893
3	15	5305-01-018-5599	97403	13214E3744W5
3	16	5310-00-880-9344	97403	13211E8337
3	17	5330-01-054-1553	80205	NAS1523C4F
3	18		97403	13215E9893-1
3	19		97403	13215E9893-2
3	20		97403	13215E9893-2
3	21	5320-00-582-3298	96906	MS20600B4W2
3	22		97403	13217E2341
3	23	5305-00-984-4983	96906	MS35206-226
3	24	5310-00-045-4007	96906	MS35338-41
3	25	5925-00-236-2349	97403	13216E6205-3
3	26		97403	13215E9822
3	27	5950-00-493-5583	97403	13214E3818-5
3	28		97403	13214E3685-2
3	29	5310-00-889-2549	96906	MS21045-08
3	30	5310-00-765-3197	96906	MS27183-41
3	31	5305-00-984-6195	96906	MS35206-247
3	32		96906	MS51007-13
3	33	5310-00-889-2543	96906	MS21045-04

TM9-4120-360-24P
SECTION IV
CROSS-REFERENCE INDEXES

FIGURE AND ITEM NUMBER INDEX

FIG	ITEM	STOCK NUMBER	CAGEC	PART NUMBER
3	34	5310-00-950-1310	96906	MS27183-4
3	35	5305-00-983-6730	96906	MS35206-218
3	36		96906	MS51007-8
3	37	5310-00-061-7326	96906	MS21045-3
3	38	5310-00-045-4007	96906	MS35338-41
3	39	5310-00-014-5850	96906	MS27183-42
3	40	5305-00-995-3444	96906	MS35207-266
3	41	5945-00-549-6348	96906	MS24192D1
3	42	5945-00-430-6933	97403	13215E9921
3	43		97403	13215E9881
3	44	5940-00-557-1629	96906	MS25036-149
3	45		97403	13215E9881-2
3	46	5961-01-054-4150	97403	13216E7689
3	47	5310-00-889-2543	96906	MS21045-04
3	48	5305-00-983-6730	96906	MS35206-218
3	49		97403	13213E0636
3	50	5305-00-984-4976	96906	MS35206-219
3	51	5310-00-950-1310	96906	MS27183-4
3	52		81349	TY37TB6
3	53	5305-00-989-6265	96906	MS35207-262
3	54	5330-00-119-7503	80205	NAS1523C3F
3	55		97403	13217E2368
3	56	5920-00-952-9460	56232	338591-4
3	57	5920-00-280-3175	81349	F09B250V1-6/10A
3	58	5310-00-889-2544	96906	MS21045-06
3	59	5305-00-059-4552	96906	MS35190-237
3	60		97403	13214E3811
3	61		97403	13211E3784
3	62	5305-00-984-4988	96906	MS35206-228
3	63	5945-00-007-7669	97403	13216E6182-3
3	64	5961-00-106-5259	97403	13214E3652
3	65		96906	MS27183-11
3	66		97403	13217E2367
3	67	5320-00-117-6938	96906	MS20426AD3-4
3	68	5310-00-623-5989	80205	NAS1031A3
3	69		97403	13217E2364-4
3	70		96906	MS20601AD4W2
3	71		97403	13211E8382
4	1	5305-00-989-7435	96906	MS35207-264
4	2	5325-00-286-6047	96906	MS35489-1
4	3	4130-01-062-0698	97403	13218E8492-1
4	4		96906	MS91528-2P4B
4	5	5305-00-984-6192	96906	MS35206-244
4	6	5310-00-889-2549	96906	MS21045-08
4	7		97403	13218E8494
4	8	5305-00-989-6265	96906	MS35207-262
4	9		96906	MS21919DFH6
4	10	5930-00-923-4176	97403	13211E8301-1
4	11	5930-00-236-2351	97403	13216E6201-1
4	12	5905-00-252-1047	81349	RCR32G274JS
4	13	5930-00-683-1628	96906	MS24523-22

TM9-4120-360-24P
SECTION IV
CROSS-REFERENCE INDEXES

FIGURE AND ITEM NUMBER INDEX

FIG	ITEM	STOCK NUMBER	CAGEC	PART NUMBER
4	14	5310-00-889-2544	96906	MS21045-06
4	15	5305-00-889-3001	96906	MS35206-231
4	16		96906	MS51007-10
4	17	5310-00-061-7326	96906	MS21045-3
4	18	5310-00-809-8546	96906	MS27183-8
4	19	5310-00-934-9751	96906	MS35650-302
4	20	5310-00-802-8544	96906	MS15795-709
4	21	5305-00-995-3444	96906	MS35207-266
4	22		97403	13218E8493
4	23		97403	13214E3762
4	24	5320-00-582-3304	96906	MS20600AD4W-2
4	25		97403	13218E8495
5	1	5305-00-989-7435	96906	MS35207-264
5	2		97403	13220E5618
5	3	5915-01-051-2774	97403	13218E9877
5	4	5320-00-117-6938	96906	MS20426AD3-4
5	5	5310-00-623-5989	80205	NAS1031A3
5	6	5305-00-889-2999	96906	MS35206-217
5	7	5310-00-934-9739	96906	MS35649-242
5	8	5310-00-543-2410	96906	MS35338-40
5	9		96906	MS51007-8
6	1	5306-00-235-4727	97403	13211E8166
6	2	5310-00-167-0768	88044	AN970-6
6	3	5310-00-401-3365	97403	13211E8170
6	4	3120-00-410-6718	97403	13211E8169
6	5	5310-00-167-0767	88044	AN970-5
6	6	5310-00-880-7744	96906	MS51967-5
6	7	4130-00-139-3378	97403	13211E3793-4
6	8		10855	KA90EC080
6	9	4540-01-143-4854	87358	SW1230-21
6	10		96906	MS24621-18
6	11		96906	MS35338-22
6	12		10855	1RG4076C
6	13		96906	MS20470AD2-4
6	14		10855	1RG5212C
6	15	5305-00-889-2999	96906	MS35206-217
6	16	5310-00-934-9739	96906	MS35649-242
6	17	5310-00-543-2410	96906	MS35338-40
6	18		96906	MS51007-1
6	19		96906	MS3102R20-15P
6	20		10855	8RG5004B
6	21		10855	AU02AA131
6	22		10855	2RG5222C
6	23		96906	MS35489-37
6	24		14859	20640L15-88-135
6	25		97403	13215E9865
6	26		97403	13218E9997-1
6	27		97403	13211E8178
6	28	5320-00-117-6938	96906	MS20426AD3-4
6	29	5310-00-777-5793	96906	MS21059L4
6	30	5310-00-481-6295	80205	NAS1329S08KB120

TM9-4120-360-24P
SECTION IV
CROSS-REFERENCE INDEXES

FIGURE AND ITEM NUMBER INDEX

FIG	ITEM	STOCK NUMBER	CAGEC	PART NUMBER
6	31		97403	13211E3895-14
6	32		96906	MS27130S26K
7	1		96906	MS35206-230
7	2		96906	MS35190-238
7	3		97403	13215E9841
7	4	5320-00-117-6938	96906	MS20426AD3-4
7	5		80205	NAS1031-D06
7	6		96906	MS35206-227
7	7	5310-00-045-4007	96906	MS35338-41
7	8		96906	MS35489-6
7	9	5930-00-911-9095	97403	13214E4309
7	10	5930-00-275-7800	97403	13211E8404
7	11		97403	13215E9861
7	12	5940-00-143-4774	96906	MS25036-153
7	13		97403	13215E9861/1
8	1	4820-01-055-1283	97403	13214E3785-1
8	2		97403	13211E8376-3
8	3	5310-00-959-4675	96906	MS35340-46
8	4	5310-00-087-7493	96906	MS27183-13
8	5	5305-00-995-3441	96906	MS35207-269
8	6		97403	13211E8376-8
8	7	5340-00-151-5997	96906	MS21122-4
8	8		81346	ASTM-B280-1/4OD
8	9	5305-00-995-3442	96906	MS35207-268
8	10		97403	13211E8376-1
8	11	5340-00-286-9423	96906	MS21919WDF6
8	12		81346	ASTM-B280-3/8OD
8	13	4730-00-822-1275	97403	13211E3799-3
8	14	5305-00-984-6192	96906	MS35206-244
8	15	5310-00-045-3299	96906	MS35338-42
8	16		81346	ASTM-B280-3/8OD
8	17		97403	13211E4043-7
8	18		81346	ASTM-B280-3/8OD
8	19	4730-00-189-2739	96906	MS35872-3
8	20	5305-00-088-8923	96906	MS35207-285
8	21	5310-00-043-0520	96906	MS35650-3252
8	22	5310-00-582-5965	96906	MS35338-44
8	23	5305-00-993-2461	96906	MS35207-281
8	24		97403	13211E8406-2
8	25	4130-00-572-4709	97403	13214E3793
8	26		81346	ASTM-B280-3/8OD
8	27		97403	13214E3411-3
8	28	4820-00-073-8405	97403	13211E8369
8	29		81346	ASTM-B280-3/8OD
8	30		81346	ASTM-B280-1/2OD
8	31		97403	13211E4043-12
8	32		96906	MS21104D8
8	33		81346	ASTM-B280-1/2OD
8	34		97403	13220E5619
8	35		97403	13214E3798-3
8	36		81346	ASTM-B280-3/8OD

TM9-4120-360-24P
SECTION IV
CROSS-REFERENCE INDEXES

FIGURE AND ITEM NUMBER INDEX

FIG	ITEM	STOCK NUMBER	CAGEC	PART NUMBER
8	37		81346	ASTM-B280-3/8OD
8	38	5305-00-989-7434	96906	MS35207-263
8	39	5305-00-957-7811	96906	MS24693S272
8	40		97403	13215E9888
8	41	5320-00-117-6938	96906	MS20426AD3-4
8	42	5310-00-623-5989	80205	NAS1031A3
8	43		97403	13215E9887
8	44	5320-00-117-6938	96906	MS20426AD3-4
8	45	5310-00-623-5989	80205	NAS1031A3
8	46	4130-00-550-2857	14852	M7160
9	1	5305-00-984-6195	96906	MS35206-247
9	2	5310-00-045-3299	96906	MS35338-42
9	3	5310-00-765-3197	96906	MS27183-41
9	4	4820-01-015-6690	97403	13219E9499-1
9	5	4730-01-092-3835	97403	13219E9540
9	6	5305-00-984-4983	96906	MS35206-226
9	7	5310-00-045-4007	96906	MS35338-41
9	8	4730-00-189-2737	96906	MS35872-2
9	9		96906	MS35489-7
9	10		81346	ASTM-B280-1/4OD
9	11		81346	ASTM-B280-1/4OD
9	12	5305-00-995-3442	96906	MS35207-268
9	13		97403	13211E8376-1
9	14	5340-00-151-5997	96906	MS21122-4
9	15		81346	ASTM-B280-1/4OD
9	16		81346	ASTM-B280-1/4OD
9	17		97403	13211E3799-1
9	18		97403	13214E3411-3
9	19		81346	ASTM B280-3/8OD
9	20	5305-00-984-6193	96906	MS35206-245
9	21		97403	13211E8245
9	22	6680-00-073-8404	97403	13211E8218
9	23		97403	13211E8242
9	24		97403	13211E8255
9	25		81346	ASTM B280-1/4OD
9	26		81346	ASTM-B280-1/4OD
9	27		96906	MS35489-8
9	28	4730-00-189-2737	96906	MS35872-2
9	29		97403	13211E8376-3
9	30		81346	ASTM B280-3/8OD
9	31		96906	MS35489-11
9	32	5325-00-286-6047	96906	MS35489-1
9	33		81346	ASTM-B280-1/2OD
9	34		81346	ASTM-B280-1/2OD
9	35	4730-00-821-3037	97403	13216E6176-3
9	36		81346	ASTM-B280-1/2OD
9	37	5305-00-889-3000	96906	MS35206-230
9	38		96906	MS21315-22
9	39	4820-00-909-3717	97403	13211E3800
9	40		41947	W2621
9	41	4730-00-821-3037	97403	13216E6176-3

TM9-4120-360-24P
SECTION IV
CROSS-REFERENCE INDEXES

FIGURE AND ITEM NUMBER INDEX

FIG	ITEM	STOCK NUMBER	CAGEC	PART NUMBER
9	42		96906	MS21104D10
9	43		81346	ASTM B280-5/8OD
9	44		81346	ASTM-B280-5/8OD
9	45		81346	ASTM-B280-1/2OD
9	46		81346	ASTM-B280-3/8OD
9	47		97403	13211E8370
9	48		97403	13211E4043-20
9	49		81346	ASTM-B280-5/8OD
9	50		97403	13215E9864-5
9	51		81346	ASTM-B280-3/4OD
9	52	5970-00-419-4291	81349	MIL-I-24391
9	53		81349	MIL-P-15280/2
9	54		97403	13216E6190-5
9	55		81346	ASTM-B280-3/4OD
9	56	5305-00-978-9385	96906	MS16997-62
9	57	5310-00-582-5965	96906	MS35338-44
9	58		97403	13211E8233
9	59		97403	13211E8394-1
9	60	4820-01-017-4248	97403	13215E9839
9	61	5310-00-959-4675	96906	MS35340-46
9	62	5305-00-995-3442	96906	MS35207-268
9	63		97403	13211E8376-1
9	64	5340-00-286-9423	96906	MS21919WDF6
9	65	5305-00-989-7434	96906	MS35207-263
9	66		97403	13219E2648
9	67	4130-00-550-2856	97403	13215E9836
9	68		80205	NAS1523C3F
9	69		97403	13215E9827
9	70	5320-00-117-6938	96906	MS20426AD3-4
9	71	5310-00-623-5989	80205	NAS1031A3
9	72		97403	13215E9898
9	73	5320-00-117-6938	96906	MS20426AD3-4
9	74	5310-00-623-5989	80205	NAS1031A3
9	75		97403	13218E6857
9	76		81346	ASTM B280-3/4OD
9	77		81346	ASTM B280-3/8OD
9	78		94833	A54477-1
9	79		96906	MS35871-2-2F
9	80	4730-00-822-1275	97403	13211E3799-3
9	81		97403	13211E3799-8
9	82		97403	13211E3799-4
9	83		81346	ASTM-B280-3/8OD
9	84		96906	MS35919-23
9	85	5305-00-984-6192	96906	MS35206-244
9	86		81346	ASTM-B280-5/32OD
9	87		81346	ASTM-B280-5/32OD
9	88		81346	ASTM-B280-5/32OD
9	89		97403	13214E3986-5
9	90		81346	ASTM-B280-3/8OD
10	1		97403	13214E4224-5
10	2	5305-00-984-4979	96906	MS35206-222

TM9-4120-360-24P
SECTION IV
CROSS-REFERENCE INDEXES

FIGURE AND ITEM NUMBER INDEX

FIG	ITEM	STOCK NUMBER	CAGEC	PART NUMBER
10	3	5310-00-088-0551	96906	MS21044N04
10	4		96906	MS3102R12S-3P
10	5		96906	MS51007-3
10	6		97403	13214E0696-3
10	7	4810-00-433-0763	93781	ORS320-24VDC
10	8		93781	OB3-141
10	9		93781	OB3-27
10	10		93781	3MP25
10	11		93781	OB241-2
10	12	5950-00-242-9749	93781	0757051
10	13		93781	OB234-15
10	14		93781	P45-11
10	15		93781	OB235-7
10	16		93781	OB241-1
11	1		97403	13214E4224-6
11	2	5305-00-984-4979	96906	MS35206-222
11	3	5310-00-088-0551	96906	MS21044N04
11	4		96906	MS3102R12S-3P
11	5		96906	MS51007-3
11	6		97403	13214E0696-3
11	7	4810-00-433-0763	93781	ORS320-24VDC
11	8		93781	OB3-141
11	9		93781	OB3-27
11	10		93781	3MP25
11	11		93781	OB241-2
11	12	5950-00-242-9749	93781	0757051
11	13		93781	OB234-15
11	14		93781	P45-11
11	15		93781	OB235-7
11	16		93781	OB241-1
12	1		97403	13214E3416
12	2		97403	13214E3744V34
12	3		94833	B93540
12	4	5310-00-880-9344	97403	13211E8337
12	5	4540-00-878-0103	97403	13211E8353-1
12	6		97403	13211E8227
12	7	5305-00-984-6193	96906	MS35206-245
12	8	5310-00-889-2549	96906	MS21045-08
12	9		97403	13215E9884
12	10	5930-00-106-1972	97403	13211E8265
12	11	5940-00-143-4780	96906	MS25036-108
12	12		97403	13215E9884/3
12	13	5305-00-889-2999	96906	MS35206-217
12	14	5310-00-934-9739	96906	MS35649-242
12	15	5310-00-543-2410	96906	MS35338-40
13	1	5305-00-984-6193	96906	MS35206-245
13	2		97403	13211E8221
13	3	4140-00-550-2994	97403	13215E9868
13	4	5305-00-983-8084	96906	MS16997-60
13	5	5315-00-730-4564	96906	MS20066-143
13	6	4140-01-172-8793	97403	13226E5892

TM9-4120-360-24P
SECTION IV
CROSS-REFERENCE INDEXES

FIGURE AND ITEM NUMBER INDEX

FIG	ITEM	STOCK NUMBER	CAGEC	PART NUMBER
13	7	5305-00-983-8084	96906	MS16997-60
13	8	5315-00-730-4577	96906	MS20066-147
13	9	5305-00-984-6195	96906	MS35206-247
13	10	5310-00-045-3299	96906	MS35338-42
13	11	5310-00-765-3197	96906	MS27183-41
13	12		97403	13211E3802
13	13		97403	13211E8376-5
13	14	5310-00-889-2543	96906	MS21045-04
13	15		94833	A82604-11
13	16		97403	13211E8300-1
13	17	5305-00-957-2640	96906	MS35191-294
13	18		97403	13211E8356
13	19	5305-00-881-0705	96906	MS51975-17
13	20	5310-00-959-4675	96906	MS35340-46
13	21	5310-00-080-6004	96906	MS27183-14
13	22		97403	13211E8300-2
13	23		97403	13215E9824
13	24	5310-00-167-0767	88044	AN970-5
13	25	5310-00-809-4061	96906	MS27183-15
14	1	6105-01-042-5688	97403	13214E3728-15
14	2		64731	02-009264-005
14	3		64731	02-012947-000
14	4		64731	01-006424-010
14	5		64731	01-006189-001
14	6	3110-01-094-2255	64731	01-005248-114
14	7		64731	02-013598-002
14	8		64731	01-009648-007
14	9		64731	01-006424-038
14	10		64731	01-006424-003
14	11		64731	02-009264-004
14	12		64731	02-009685-007
14	13		64731	02-009264-003
14	14		64731	02-009912-000
14	15	6110-01-052-5399	64731	01-008773-052
14	16	6110-01-052-5400	64731	01-008773-053
14	17		64731	02-013598-001
15	1		97403	13215E9879
15	2	5935-00-824-7883	96906	MS3102R36-7S
15	3		96906	MS3367-1-9
15	4	5940-00-143-4794	96906	MS25036-112
15	5	5940-00-143-4780	96906	MS25036-108
15	6	5940-00-283-5280	96906	MS25036-106
15	7	5940-00-143-4774	96906	MS25036-153
15	8	5940-00-150-4682	97403	13216E6192
15	9		97403	13216E6191-3
15	10		97403	13216E6191-2
15	11		81349	MIL-I-23053/5
15	12		81349	MIL-23053/5
15	13		81349	M5086/2-12-9
15	14		81349	M5086/2-14-9
15	15		97403	13215E9879/10

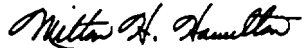
TM9-4120-360-24P
SECTION IV
CROSS-REFERENCE INDEXES

FIGURE AND ITEM NUMBER INDEX

FIG	ITEM	STOCK NUMBER	CAGEC	PART NUMBER
15	16		97403	13215E9866
15	17	5935-00-804-5816	96906	MS3102R22-22P
15	18	5940-00-143-4794	96906	MS25036-112
15	19		81349	MIL-I-23053/1
15	20	6145-00-578-7513	81349	M5086/2-10-9
16	1		97403	13215E9853
16	2	5940-00-143-4780	96906	MS25036-108
16	3	5940-00-283-5280	96906	MS25036-106
16	4	5940-00-143-4774	96906	MS25036-153
16	5		96906	13211E8288
16	6		96906	MS3367-1-9
16	7		97403	13215E9853/6
16	8		81349	M5086/2-14-9
16	9		81349	MIL-I-23053/1
16	10	5935-00-818-7448	96906	MS3102R28-11P
17	1		97403	13215E9919
17	2	5940-00-143-4780	96906	MS25036-108
17	3		96906	MS3367-1-9
17	4		97403	13215E9919/3
17	5	5935-00-823-0272	96906	MS3100R14S-6P
17	6		97403	13215E9862
17	7		96906	MS3100R22-22P
17	8	5935-01-118-5714	96906	MS3456W22-22S
17	9		97403	13215E9862/3
17	10		81349	M5086/2-10-9
18	1		97403	13217E2342
18	2	5935-01-118-5714	96906	MS3456W22-22S
18	3	5935-00-087-1667	96906	MS3106R22-22P
18	4		96906	MS3367-1-9
18	5		81349	M5086/1-10-9
18	6	5305-00-995-3442	96906	MS35207-268
18	7		97403	13211E8376-1
18	8	5340-00-286-9423	96906	MS21919WDF6
18	9	5340-00-151-5997	96906	MS21122-4
18	10		96906	MS21104D5
18	11	4120-01-138-2623	97403	13215E9918
18	12	5935-00-846-5602	96906	MS3106R36-7P
18	13	5935-00-682-0552	96906	MS3106R28-11S
18	14	5935-00-816-8646	96906	MS3106R20-15S
18	15	5935-00-725-4638	96906	MS3106R12S-3S
18	16	5930-01-169-5301	97403	13221E9273-2
18	17	5935-00-846-2329	96906	MS3106R20-27S
18	18	5935-00-725-4638	96906	MS3106R12S-3S
18	19	5935-00-721-0488	96906	MS3106R14S-6S
18	20	5940-00-143-4774	96906	MS25036-153
18	21		96906	MS25036-157
18	22		96906	MS3367-1-9
18	23		81349	M5086/2-12-9
18	24		81349	M5086/2-14-9
18	25		97403	13215E9918/11

By Order of the Secretary of the Army:

Official:



MILTON H. HAMILTON
*Administrative Assistant to the
Secretary of the Army*

GORDON R. SULLIVAN
*General, United States Army
Chief of Staff*

DISTRIBUTION:

To be distributed in accordance with DA Form 12-25-E, block no. 6153,
requirements for TM 9-4120-360-24P.

RECOMMENDED CHANGES TO EQUIPMENT TECHNICAL PUBLICATIONS



THEN... JOT DOWN THE DOPE ABOUT IT ON THIS FORM. CAREFULLY TEAR IT OUT, FOLD IT AND DROP IT IN THE MAIL!

SOMETHING WRONG WITH THIS PUBLICATION?

FROM: (PRINT YOUR UNIT'S COMPLETE ADDRESS)

PFC JOHN DOE
COA, 3d ENGINEER BN
FT. LEANORWOOD, MD 63108

DATE SENT

PUBLICATION NUMBER
TM 9-4120-360-24P

PUBLICATION DATE
31 Aug 1993

PUBLICATION TITLE
AIR CONDITIONER, VERTICAL, COMPACT

BE EXACT. PIN-POINT WHERE IT IS

PAGE NO	PARA-GRAPH	FIGURE NO	TABLE NO
6	2-1 a		
B1		4-3	
125	line 20		

IN THIS SPACE TELL WHAT IS WRONG AND WHAT SHOULD BE DONE ABOUT IT:

In line 6 of paragraph 2-1a the manual states the engine has 6 Cylinders. The engine on my set only has 4 Cylinders. Change the manual to show 4 Cylinders.

Callout 16 on figure 4-3 is pointing at a bolt. In key to figure 4-3, item 16 is called a shim - Please correct one or the other.

I ordered a gasket, item 19 on figure B-16 by NSN 2 910-00-762-3001. I got a gasket but it doesn't fit. Supply says I got what I ordered, so the NSN is wrong. Please give me a good NSN

PRINTED NAME, GRADE OR TITLE, AND TELEPHONE NUMBER

JOHN DOE, PFC (268) 317-7111

SIGN HERE

JOHN DOE

DA FORM 2028-2
1 JUL 79

PREVIOUS EDITIONS ARE OBSOLETE.
DRSTS-M Overprint 1, 1 Nov 80

P.S.--IF YOUR OUTFIT WANTS TO KNOW ABOUT YOUR RECOMMENDATION MAKE A CARBON COPY OF THIS AND GIVE IT TO YOUR HEADQUARTERS

TEAR ALONG PERFORATED LINE

RECOMMENDED CHANGES TO EQUIPMENT TECHNICAL PUBLICATIONS



THEN... JOT DOWN THE DOPE ABOUT IT ON THIS FORM. CAREFULLY TEAR IT OUT. FOLD IT AND DROP IT IN THE MAIL!

SOMETHING WRONG WITH THIS PUBLICATION?

FROM: (PRINT YOUR UNIT'S COMPLETE ADDRESS)

DATE SENT

PUBLICATION NUMBER

TM 9-4120-360-24P

PUBLICATION DATE

31 Aug 1993

PUBLICATION TITLE

AIR CONDITIONER, VERTICAL, COMPACT

BE EXACT PIN-POINT WHERE IT IS

PAGE NO

PARA-GRAPH

FIGURE NO

TABLE NO

IN THIS SPACE TELL WHAT IS WRONG AND WHAT SHOULD BE DONE ABOUT IT:

PRINTED NAME GRADE OR TITLE AND TELEPHONE NUMBER

SIGN HERE

FILL IN YOUR
UNITS ADDRESS



FOLD BACK

DEPARTMENT OF THE ARMY

OFFICIAL BUSINESS

COMMANDER
U.S. ARMY AVIATION AND TROOP COMMAND
ATTN: AMSAT-I-MP
4300 GOODFELLOW BOULEVARD
ST. LOUIS, MO 63120-1798

TEAR ALONG PERFORATED LINE

The Metric System and Equivalents

Linear Measure

1 centimeter = 10 millimeters = .39 inch
 1 decimeter = 10 centimeters = 3.94 inches
 1 meter = 10 decimeters = 39.37 inches
 1 dekameter = 10 meters = 32.8 feet
 1 hectometer = 10 dekameters = 328.08 feet
 1 kilometer = 10 hectometers = 3,280.8 feet

Weights

1 centigram = 10 milligrams = .15 grain
 1 decigram = 10 centigrams = 1.54 grains
 1 gram = 10 decigram = .035 ounce
 1 dekagram = 10 grams = .35 ounce
 1 hectogram = 10 dekagrams = 3.52 ounces
 1 kilogram = 10 hectograms = 2.2 pounds
 1 quintal = 100 kilograms = 220.46 pounds
 1 metric ton = 10 quintals = 1.1 short tons

Liquid Measure

1 centiliter = 10 milliliters = .34 fl. ounce
 1 deciliter = 10 centiliters = 3.38 fl. ounces
 1 liter = 10 deciliters = 33.81 fl. ounces
 1 dekaliter = 10 liters = 2.64 gallons
 1 hectoliter = 10 dekaliters = 26.42 gallons
 1 kiloliter = 10 hectoliters = 264.18 gallons

Square Measure

1 sq. centimeter = 100 sq. millimeters = .155 sq. inch
 1 sq. decimeter = 100 sq. centimeters = 15.5 sq. inches
 1 sq. meter (centare) = 100 sq. decimeters = 10.76 sq. feet
 1 sq. dekameter (are) = 100 sq. meters = 1,076.4 sq. feet
 1 sq. hectometer (hectare) = 100 sq. dekameters = 2.47 acres
 1 sq. kilometer = 100 sq. hectometers = .386 sq. mile

Cubic Measure

1 cu. centimeter = 1000 cu. millimeters = .06 cu. inch
 1 cu. decimeter = 1000 cu. centimeters = 61.02 cu. inches
 1 cu. meter = 1000 cu. decimeters = 35.31 cu. feet

Approximate Conversion Factors

To change	To	Multiply by	To change	To	Multiply by
inches	centimeters	2.540	ounce-inches	newton-meters	.007062
feet	meters	.305	centimeters	inches	.394
yards	meters	.914	meters	feet	3.280
miles	kilometers	1.609	meters	yards	1.094
square inches	square centimeters	6.451	kilometers	miles	.621
square feet	square meters	.093	square centimeters	square inches	.155
square yards	square meters	.836	square meters	square feet	10.764
square miles	square kilometers	2.590	square meters	square yards	1.196
acres	square hectometers	.405	square kilometers	square miles	.386
cubic feet	cubic meters	.028	square hectometers	acres	2.471
cubic yards	cubic meters	.765	cubic meters	cubic feet	35.315
fluid ounces	milliliters	29.573	cubic meters	cubic yards	1.308
pints	liters	.473	milliliters	fluid ounces	.034
quarts	liters	.946	liters	pints	2.113
gallons	liters	3.785	liters	quarts	1.057
ounces	grams	28.349	liters	gallons	.264
pounds	kilograms	.454	grams	ounces	.035
short tons	metric tons	.907	kilograms	pounds	2.205
pound-feet	newton-meters	1.356	metric tons	short tons	1.102
pound-inches	newton-meters	.11296			

Temperature (Exact)

°F	Fahrenheit temperature	5/9 (after subtracting 32)	Celsius temperature	°C
----	------------------------	----------------------------	---------------------	----

PIN: 071710-000